

DOWNTOWN VIEWS II

TOWER 3 FLOOR PLANS



DOWNTOWN VIEWS II



TOWER 3 1 BEDROOM W/BALCONY UNIT 01/ LEVELS 2-15, 17-30

Suite Area	647.45 Sq.ft. / 60.15 Sq.m.
Balcony Area	80.94 Sq.ft. / 7.52 Sq.m.
Total Area	728.39 Sq.ft. / 67.67 Sq.m.



1. All dimensions are in imperial and metric, and measured to structural elements and exclude wall finishes and construction tolerances. 2. All materials, dimensions, and drawings are approximate only. 3. Information is subject to change without notice, at developer's absolute discretion. 4. Actual area may vary from the stated area. 5. Drawings not to scale. 6. All images used are for illustrative purposes only and do not represent the actual size, features, specifications, fittings, and furnishings. 7. The developer reserves the right to make revisions/alterations, at its absolute discretion, without any liability whatsoever.

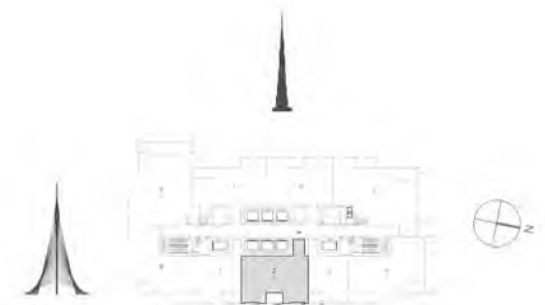


DOWNTOWN VIEWS II



TOWER 3 2 BEDROOM W/BALCONY UNIT 02/ LEVELS 2-15, 17-30

Suite Area	1031.51 Sq.ft. / 95.83 Sq.m.
Balcony Area	61.89 Sq.ft. / 5.75 Sq.m.
Total Area	1093.40 Sq.ft. / 101.58 Sq.m.



1. All dimensions are in imperial and metric, and measured to structural elements and exclude wall finishes and construction tolerances. 2. All materials, dimensions, and drawings are approximate only. 3. Information is subject to change without notice, at developer's absolute discretion. 4. Actual area may vary from the stated area. 5. Drawings not to scale. 6. All images used are for illustrative purposes only and do not represent the actual size, features, specifications, fittings, and furnishings. 7. The developer reserves the right to make revisions/alterations, at its absolute discretion, without any liability whatsoever.



DOWNTOWN VIEWS II



TOWER 3 1 BEDROOM W/BALCONY UNIT 03/ LEVELS 2-15, 17-30

Suite Area	647.13 Sq.ft. / 60.12 Sq.m.
Balcony Area	80.94 Sq.ft. / 7.52 Sq.m.
Total Area	728.07 Sq.ft. / 67.64 Sq.m.



1. All dimensions are in imperial and metric, and measured to structural elements and exclude wall finishes and construction tolerances. 2. All materials, dimensions, and drawings are approximate only. 3. Information is subject to change without notice, at developer's absolute discretion. 4. Actual area may vary from the stated area. 5. Drawings not to scale. 6. All images used are for illustrative purposes only and do not represent the actual size, features, specifications, fittings, and furnishings. 7. The developer reserves the right to make revisions/alterations, at its absolute discretion, without any liability whatsoever.

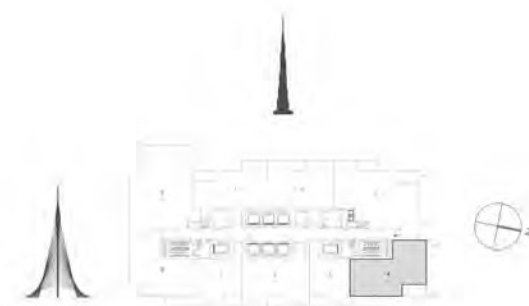


DOWNTOWN VIEWS II



TOWER 3 2 BEDROOM W/BALCONY UNIT 04/ LEVELS 2-15, 17-30

Suite Area	1015.47 Sq.ft. / 94.34 Sq.m.
Balcony Area	211.30 Sq.ft. / 19.63 Sq.m.
Total Area	1226.77 Sq.ft. / 113.97 Sq.m.



1. All dimensions are in imperial and metric, and measured to structural elements and exclude wall finishes and construction tolerances. 2. All materials, dimensions, and drawings are approximate only. 3. Information is subject to change without notice, at developer's absolute discretion. 4. Actual area may vary from the stated area. 5. Drawings not to scale. 6. All images used are for illustrative purposes only and do not represent the actual size, features, specifications, fittings, and furnishings. 7. The developer reserves the right to make revisions/alterations, at its absolute discretion, without any liability whatsoever.

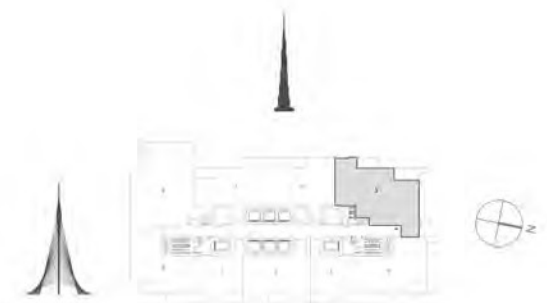


DOWNTOWN VIEWS II



TOWER 3 3 BEDROOM W/BALCONY UNIT 05/ LEVELS 2-15, 17-30

Suite Area	1450.54 Sq.ft. / 134.76 Sq.m.
Balcony Area	176.85 Sq.ft. / 16.43 Sq.m.
Total Area	1627.39 Sq.ft. / 151.19 Sq.m.



1. All dimensions are in imperial and metric, and measured to structural elements and exclude wall finishes and construction tolerances. 2. All materials, dimensions, and drawings are approximate only. 3. Information is subject to change without notice, at developer's absolute discretion. 4. Actual area may vary from the stated area. 5. Drawings not to scale. 6. All images used are for illustrative purposes only and do not represent the actual size, features, specifications, fittings, and furnishings. 7. The developer reserves the right to make revisions/alterations, at its absolute discretion, without any liability whatsoever.

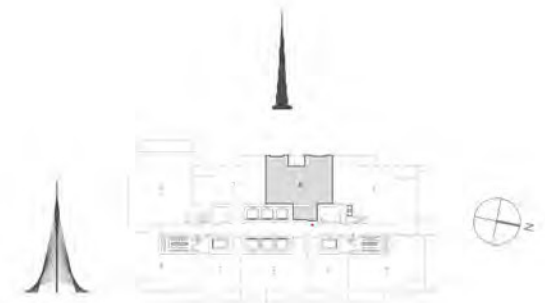


DOWNTOWN VIEWS II



TOWER 3 2 BEDROOM W/BALCONY UNIT 06/ LEVELS 2-15, 17-30

Suite Area	1136.56 Sq.ft. / 105.59 Sq.m.
Balcony Area	71.04 Sq.ft. / 6.60 Sq.m.
Total Area	1207.60 Sq.ft. / 112.19 Sq.m.



1. All dimensions are in imperial and metric, and measured to structural elements and exclude wall finishes and construction tolerances. 2. All materials, dimensions, and drawings are approximate only. 3. Information is subject to change without notice, at developer's absolute discretion. 4. Actual area may vary from the stated area. 5. Drawings not to scale. 6. All images used are for illustrative purposes only and do not represent the actual size, features, specifications, fittings, and furnishings. 7. The developer reserves the right to make revisions/alterations, at its absolute discretion, without any liability whatsoever.

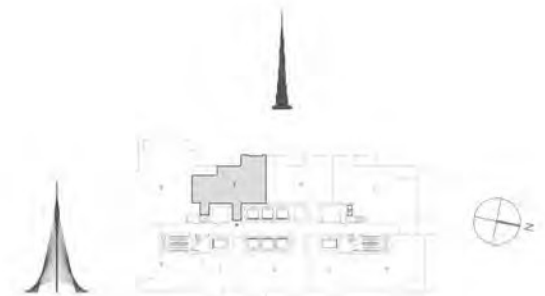


DOWNTOWN VIEWS II



TOWER 3 2 BEDROOM W/BALCONY UNIT 07/ LEVELS 2-15, 17-30

Suite Area	1027.95 Sq.ft. / 95.50 Sq.m.
Balcony Area	76.96 Sq.ft. / 7.15 Sq.m.
Total Area	1104.91 Sq.ft. / 102.65 Sq.m.



1. All dimensions are in imperial and metric, and measured to structural elements and exclude wall finishes and construction tolerances. 2. All materials, dimensions, and drawings are approximate only. 3. Information is subject to change without notice, at developer's absolute discretion. 4. Actual area may vary from the stated area. 5. Drawings not to scale. 6. All images used are for illustrative purposes only and do not represent the actual size, features, specifications, fittings, and furnishings. 7. The developer reserves the right to make revisions/alterations, at its absolute discretion, without any liability whatsoever.

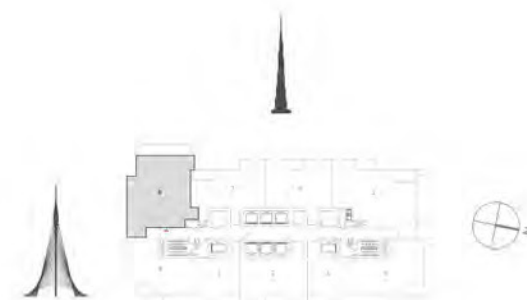


DOWNTOWN VIEWS II



TOWER 3 3 BEDROOM W/BALCONY UNIT 08/ LEVELS 2-15, 17-30

Suite Area	1522.12 Sq.ft. / 141.41 Sq.m.
Balcony Area	181.26 Sq.ft. / 16.84 Sq.m.
Total Area	1703.38 Sq.ft. / 158.25 Sq.m.



1. All dimensions are in imperial and metric, and measured to structural elements and exclude wall finishes and construction tolerances. 2. All materials, dimensions, and drawings are approximate only. 3. Information is subject to change without notice, at developer's absolute discretion. 4. Actual area may vary from the stated area. 5. Drawings not to scale. 6. All images used are for illustrative purposes only and do not represent the actual size, features, specifications, fittings, and furnishings. 7. The developer reserves the right to make revisions/alterations, at its absolute discretion, without any liability whatsoever.

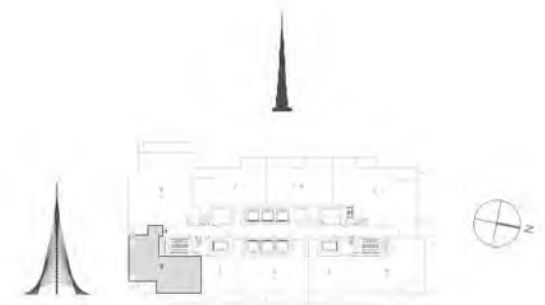


DOWNTOWN VIEWS II



TOWER 3 2 BEDROOM W/BALCONY UNIT 09/ LEVELS 2-15, 17-30

Suite Area	1024.83 Sq.ft. / 95.21 Sq.m.
Balcony Area	190.74 Sq.ft. / 17.72 Sq.m.
Total Area	1215.57 Sq.ft. / 112.93 Sq.m.



1. All dimensions are in imperial and metric, and measured to structural elements and exclude wall finishes and construction tolerances. 2. All materials, dimensions, and drawings are approximate only. 3. Information is subject to change without notice, at developer's absolute discretion. 4. Actual area may vary from the stated area. 5. Drawings not to scale. 6. All images used are for illustrative purposes only and do not represent the actual size, features, specifications, fittings, and furnishings. 7. The developer reserves the right to make revisions/alterations, at its absolute discretion, without any liability whatsoever.



DOWNTOWN VIEWS II



TOWER 3 1 BEDROOM W/BALCONY UNIT 01/ LEVELS 32-47

Suite Area	643.04 Sq.ft. / 59.74 Sq.m.
Balcony Area	79.98 Sq.ft. / 7.43 Sq.m.
Total Area	723.02 Sq.ft. / 67.17 Sq.m.



1. All dimensions are in imperial and metric, and measured to structural elements and exclude wall finishes and construction tolerances. 2. All materials, dimensions, and drawings are approximate only. 3. Information is subject to change without notice, at developer's absolute discretion. 4. Actual area may vary from the stated area. 5. Drawings not to scale. 6. All images used are for illustrative purposes only and do not represent the actual size, features, specifications, fittings, and furnishings. 7. The developer reserves the right to make revisions/alterations, at its absolute discretion, without any liability whatsoever.

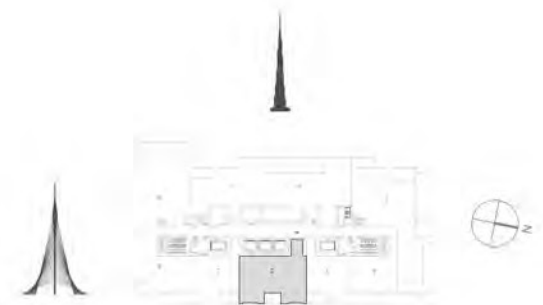


DOWNTOWN VIEWS II



TOWER 3 2 BEDROOM W/BALCONY UNIT 02/ LEVELS 32-47

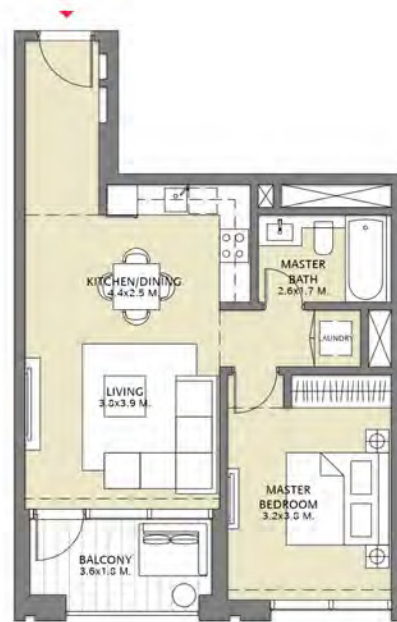
Suite Area	1037.00 Sq.ft. / 96.34 Sq.m.
Balcony Area	61.89 Sq.ft. / 5.75 Sq.m.
Total Area	1098.89 Sq.ft. / 102.09 Sq.m.



1. All dimensions are in imperial and metric, and measured to structural elements and exclude wall finishes and construction tolerances. 2. All materials, dimensions, and drawings are approximate only. 3. Information is subject to change without notice, at developer's absolute discretion. 4. Actual area may vary from the stated area. 5. Drawings not to scale. 6. All images used are for illustrative purposes only and do not represent the actual size, features, specifications, fittings, and furnishings. 7. The developer reserves the right to make revisions/alterations, at its absolute discretion, without any liability whatsoever.

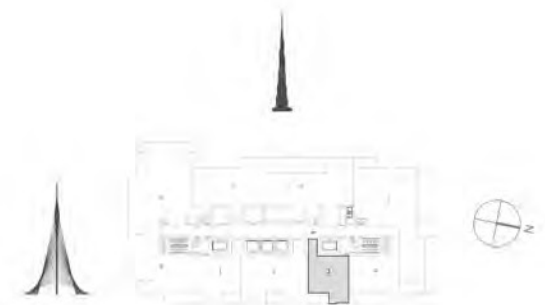


DOWNTOWN VIEWS II



TOWER 3 1 BEDROOM W/BALCONY UNIT 03/ LEVELS 32-47

Suite Area	643.04 Sq.ft. / 59.74 Sq.m.
Balcony Area	79.98 Sq.ft. / 7.43 Sq.m.
Total Area	723.02 Sq.ft. / 67.17 Sq.m.



1. All dimensions are in imperial and metric, and measured to structural elements and exclude wall finishes and construction tolerances. 2. All materials, dimensions, and drawings are approximate only. 3. Information is subject to change without notice, at developer's absolute discretion. 4. Actual area may vary from the stated area. 5. Drawings not to scale. 6. All images used are for illustrative purposes only and do not represent the actual size, features, specifications, fittings, and furnishings. 7. The developer reserves the right to make revisions/alterations, at its absolute discretion, without any liability whatsoever.

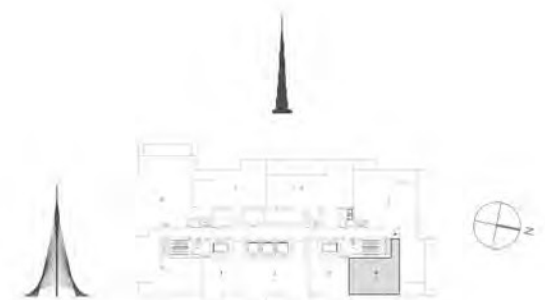


DOWNTOWN VIEWS II



TOWER 3 1 BEDROOM W/BALCONY UNIT 04/ LEVELS 32-47

Suite Area	687.38 Sq.ft. / 63.86 Sq.m.
Balcony Area	118.30 Sq.ft. / 10.99 Sq.m.
Total Area	805.68 Sq.ft. / 74.85 Sq.m.



1. All dimensions are in imperial and metric, and measured to structural elements and exclude wall finishes and construction tolerances. 2. All materials, dimensions, and drawings are approximate only. 3. Information is subject to change without notice, at developer's absolute discretion. 4. Actual area may vary from the stated area. 5. Drawings not to scale. 6. All images used are for illustrative purposes only and do not represent the actual size, features, specifications, fittings, and furnishings. 7. The developer reserves the right to make revisions/alterations, at its absolute discretion, without any liability whatsoever.

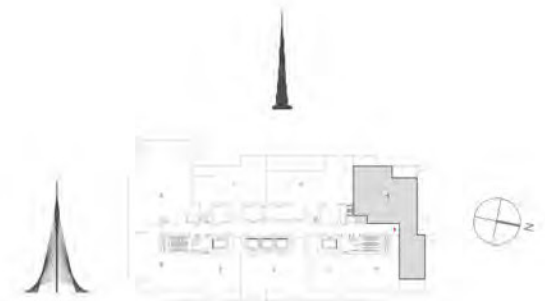


DOWNTOWN VIEWS II



TOWER 3 3 BEDROOM W/BALCONY UNIT 05/ LEVELS 32-47

Suite Area	1444.30 Sq.ft. / 134.18 Sq.m.
Balcony Area	269.74 Sq.ft. / 25.06 Sq.m.
Total Area	1714.04 Sq.ft. / 159.24 Sq.m.



1. All dimensions are in imperial and metric, and measured to structural elements and exclude wall finishes and construction tolerances. 2. All materials, dimensions, and drawings are approximate only. 3. Information is subject to change without notice, at developer's absolute discretion. 4. Actual area may vary from the stated area. 5. Drawings not to scale. 6. All images used are for illustrative purposes only and do not represent the actual size, features, specifications, fittings, and furnishings. 7. The developer reserves the right to make revisions/alterations, at its absolute discretion, without any liability whatsoever.



DOWNTOWN VIEWS II



TOWER 3 3 BEDROOM W/BALCONY UNIT 06/ LEVELS 32-47

Suite Area	1510.07 Sq.ft. / 140.29 Sq.m.
Balcony Area	311.29 Sq.ft. / 28.92 Sq.m.
Total Area	1821.36 Sq.ft. / 169.21 Sq.m.



1. All dimensions are in imperial and metric, and measured to structural elements and exclude wall finishes and construction tolerances. 2. All materials, dimensions, and drawings are approximate only. 3. Information is subject to change without notice, at developer's absolute discretion. 4. Actual area may vary from the stated area. 5. Drawings not to scale. 6. All images used are for illustrative purposes only and do not represent the actual size, features, specifications, fittings, and furnishings. 7. The developer reserves the right to make revisions/alterations, at its absolute discretion, without any liability whatsoever.



DOWNTOWN VIEWS II



TOWER 3 2 BEDROOM W/BALCONY UNIT 07/ LEVELS 32-47

Suite Area	1028.92 Sq.ft. / 95.59 Sq.m.
Balcony Area	76.96 Sq.ft. / 7.15 Sq.m.
Total Area	1105.88 Sq.ft. / 102.74 Sq.m.



1. All dimensions are in imperial and metric, and measured to structural elements and exclude wall finishes and construction tolerances. 2. All materials, dimensions, and drawings are approximate only. 3. Information is subject to change without notice, at developer's absolute discretion. 4. Actual area may vary from the stated area. 5. Drawings not to scale. 6. All images used are for illustrative purposes only and do not represent the actual size, features, specifications, fittings, and furnishings. 7. The developer reserves the right to make revisions/alterations, at its absolute discretion, without any liability whatsoever.

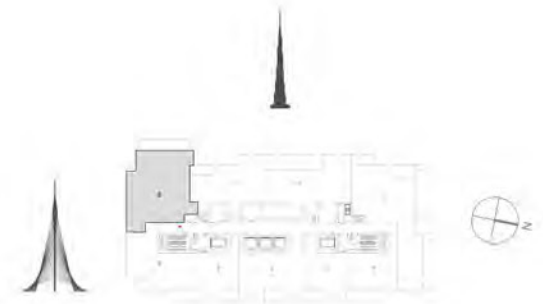


DOWNTOWN VIEWS II



TOWER 3 3 BEDROOM W/BALCONY UNIT 08/ LEVELS 32-47

Suite Area	1522.12 Sq.ft. / 141.41 Sq.m.
Balcony Area	181.26 Sq.ft. / 16.84 Sq.m.
Total Area	1703.38 Sq.ft. / 158.25 Sq.m.



1. All dimensions are in imperial and metric, and measured to structural elements and exclude wall finishes and construction tolerances. 2. All materials, dimensions, and drawings are approximate only. 3. Information is subject to change without notice, at developer's absolute discretion. 4. Actual area may vary from the stated area. 5. Drawings not to scale. 6. All images used are for illustrative purposes only and do not represent the actual size, features, specifications, fittings, and furnishings. 7. The developer reserves the right to make revisions/alterations, at its absolute discretion, without any liability whatsoever.

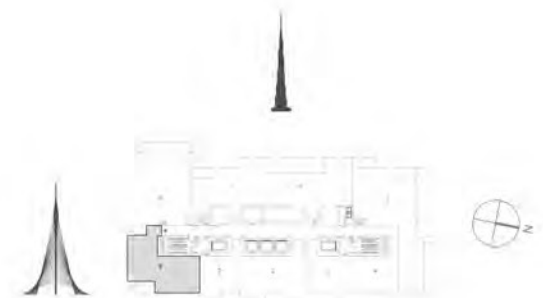


DOWNTOWN VIEWS II



TOWER 3 2 BEDROOM W/BALCONY UNIT 09/ LEVELS 32-47

Suite Area	1028.92 Sq.ft. / 95.59 Sq.m.
Balcony Area	191.71 Sq.ft. / 17.81 Sq.m.
Total Area	1220.63 Sq.ft. / 113.40 Sq.m.



1. All dimensions are in imperial and metric, and measured to structural elements and exclude wall finishes and construction tolerances. 2. All materials, dimensions, and drawings are approximate only. 3. Information is subject to change without notice, at developer's absolute discretion. 4. Actual area may vary from the stated area. 5. Drawings not to scale. 6. All images used are for illustrative purposes only and do not represent the actual size, features, specifications, fittings, and furnishings. 7. The developer reserves the right to make revisions/alterations, at its absolute discretion, without any liability whatsoever.

