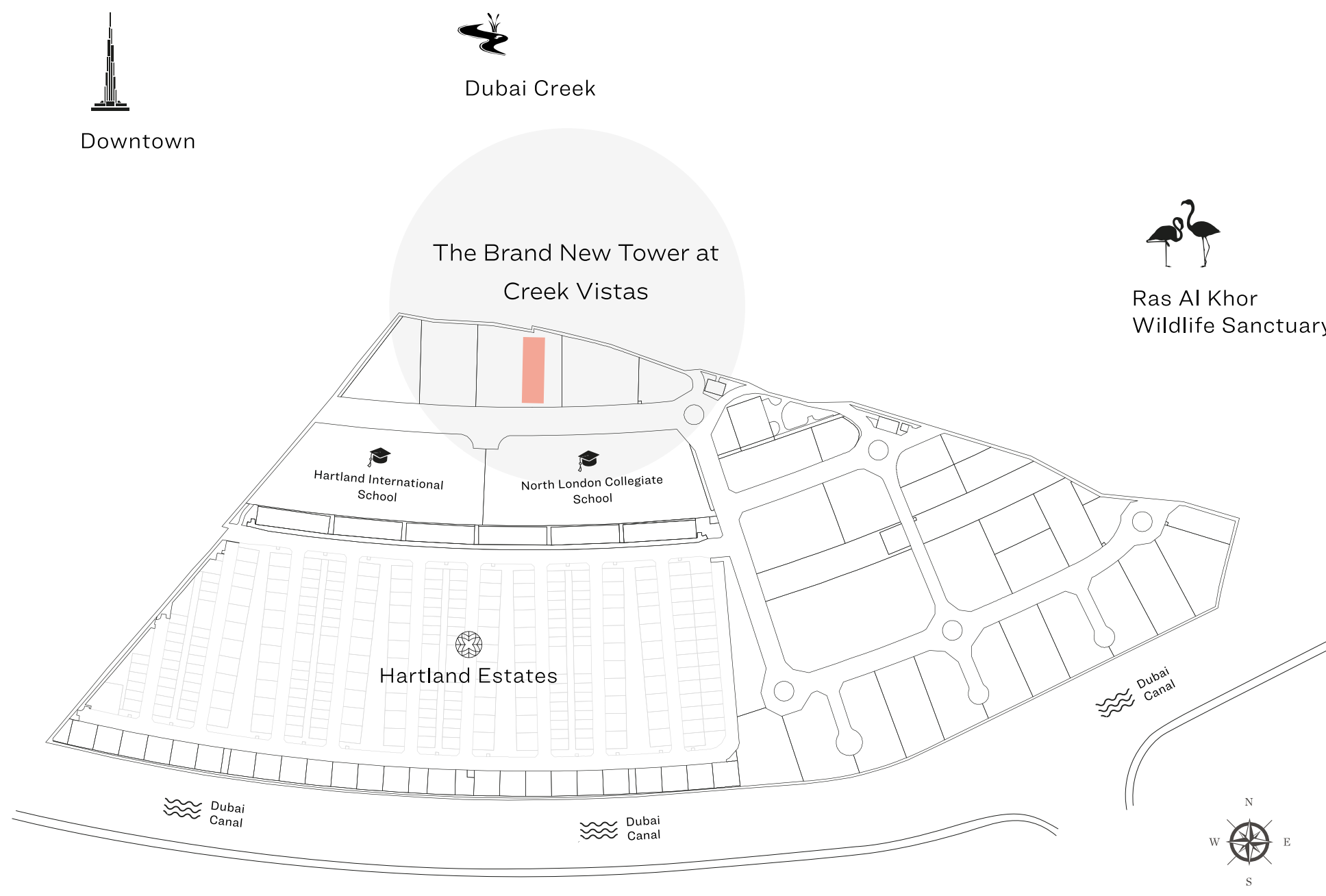


SOBHA HARTLAND
CREEK VISTAS

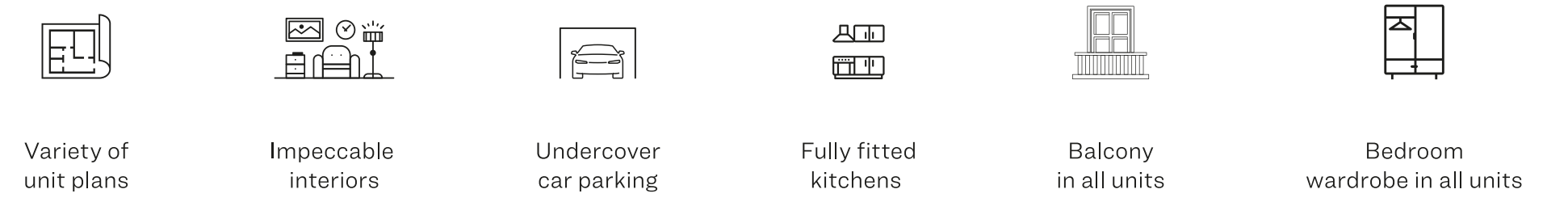
FLOOR PLAN



MASTER PLAN



APARTMENT FEATURES



SOBHA HARTLAND

CREEK VISTAS

UNIT PLAN

- 1 BEDROOM TYPE A
- 1 BEDROOM TYPE B
- 2 BEDROOM TYPE A
- 2 BEDROOM TYPE B





SOBHA HARTLAND

CREEK VISTAS



Dubai Canal



Downtown

1 BEDROOM APARTMENT

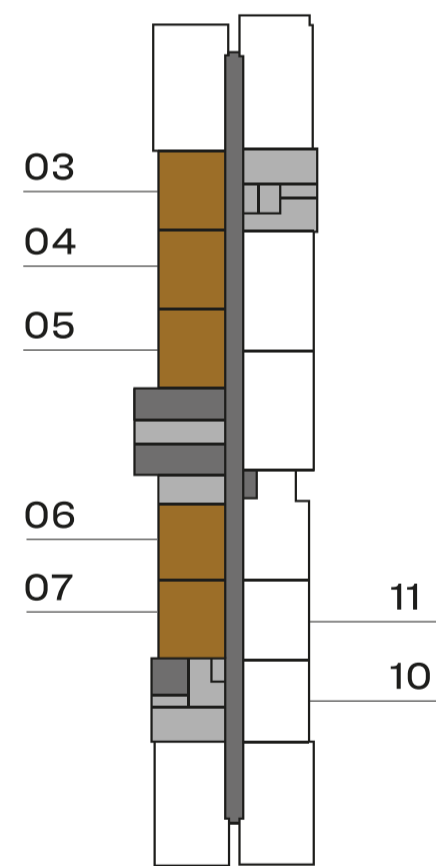
TYPE A (with balcony)

Downtown and Canal view

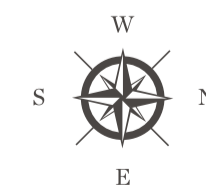
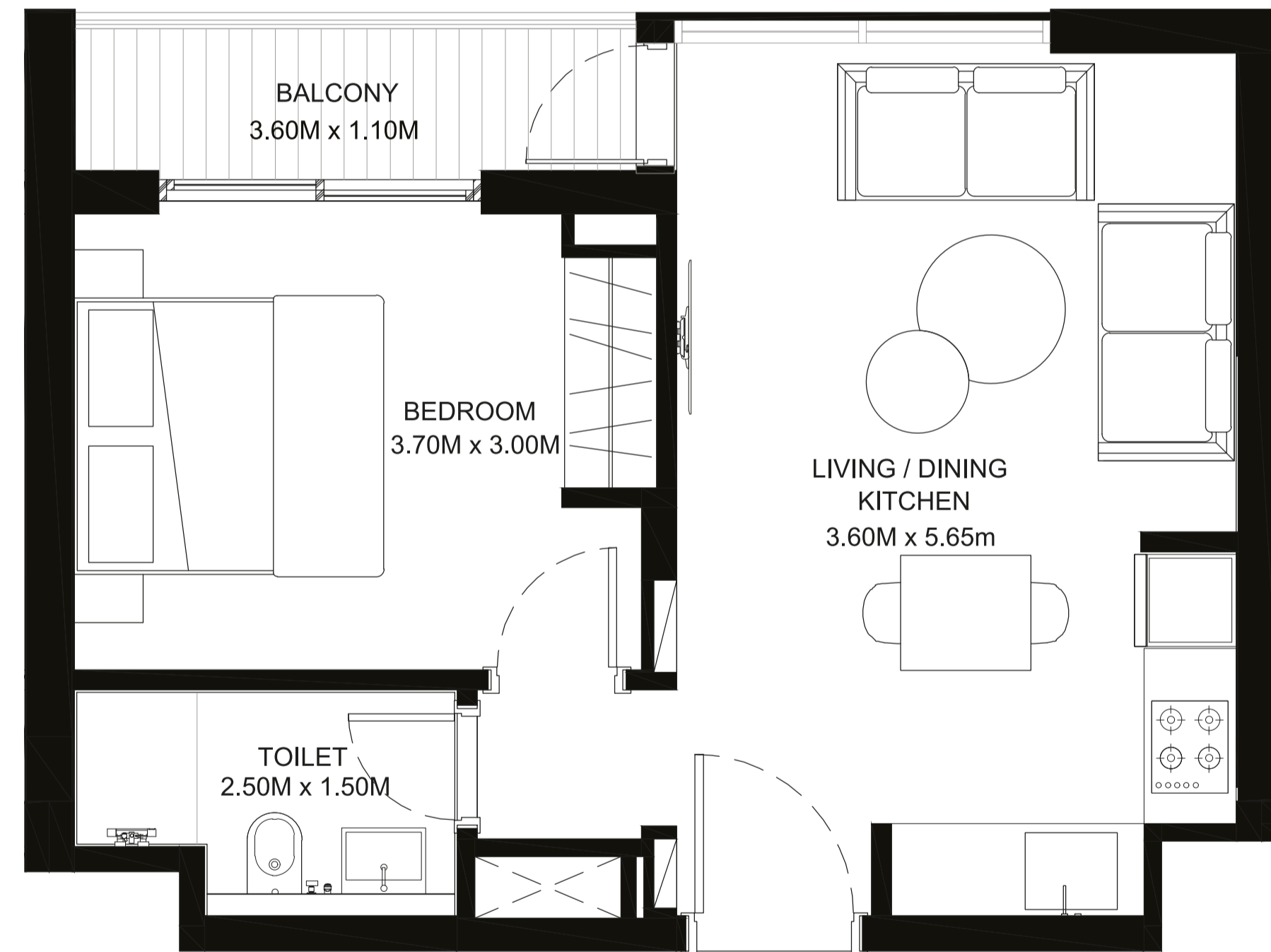
Suite Area - 445.09 Sq. Ft.

Balcony Area - 49.41 Sq. Ft.

Net Saleable Area - 494.50 Sq. Ft.



UNIT TYPE - 1A | LEVELS 2 - 28



Disclaimer: 1. All dimensions are in metric, measured to wall finishes. 2. All materials, dimensions & drawings are approximate. 3. Information is subject to change without notice, at developer's absolute discretion. 4. Actual area may vary from the stated area. 5. Drawings are not to scale. 6. All images used are for illustrative purposes only and do not represent the actual size, features, specifications, fittings and furnishings. 7. The developer reserves the right to make revisions/ alterations, at its absolute discretion, without any liability whatsoever.



SOBHA HARTLAND

CREEK VISTAS

1 BEDROOM APARTMENT

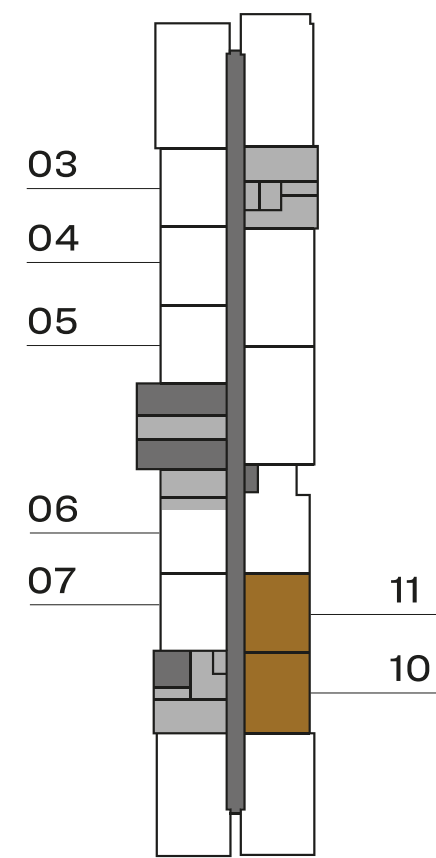
TYPE A (with balcony)

Ras Al Khor Wildlife Sanctuary and Canal view

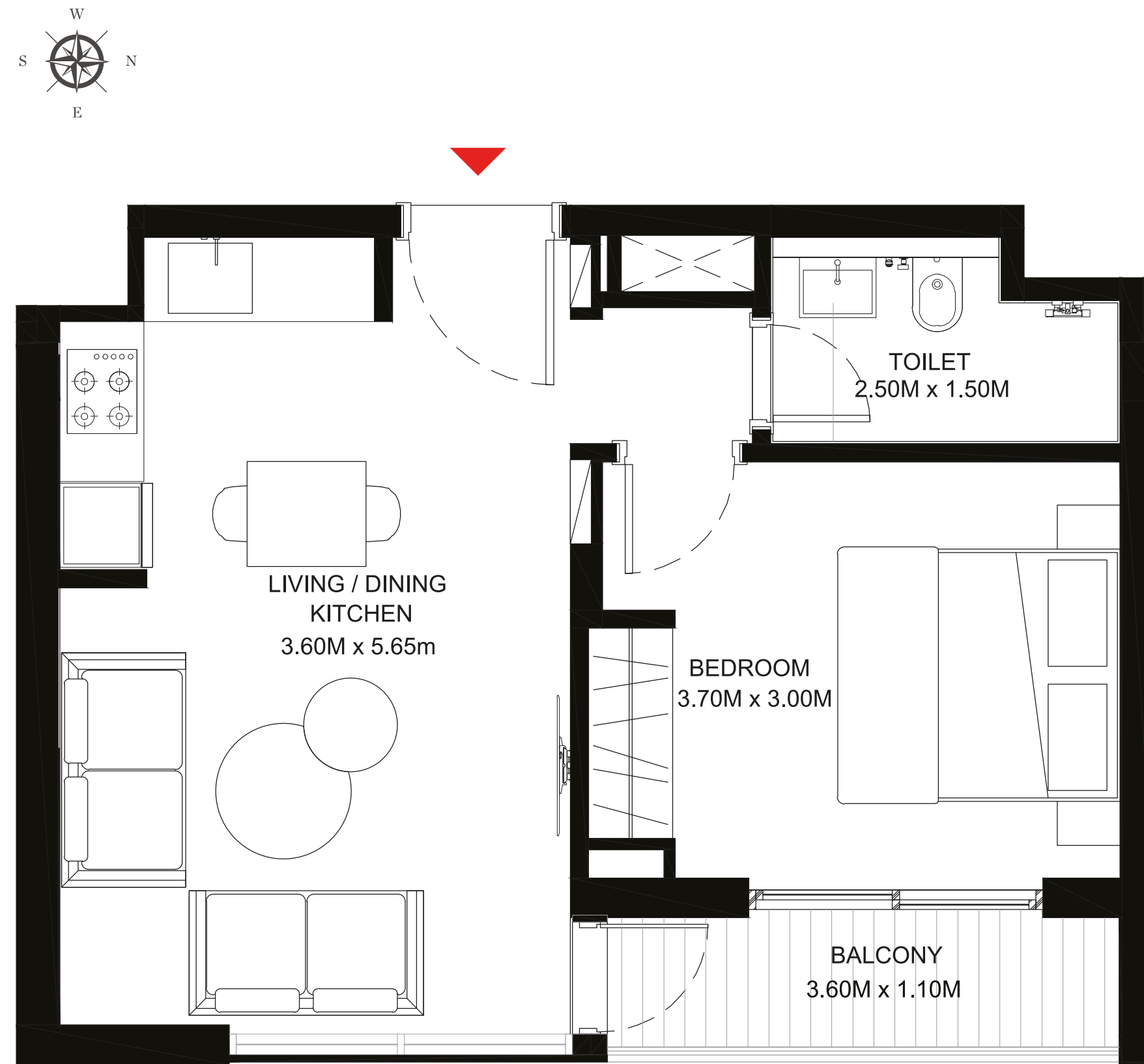
Suite Area - 444.00 Sq. Ft.

Balcony Area - 49.00 Sq. Ft.

Net Saleable Area - 493.00 Sq. Ft.



UNIT TYPE - 1A | LEVELS 2 - 28



Dubai Canal



Ras Al Khor
Wildlife Sanctuary

Disclaimer: 1. All dimensions are in metric, measured to wall finishes. 2. All materials, dimensions & drawings are approximate. 3. Information is subject to change without notice, at developer's absolute discretion. 4. Actual area may vary from the stated area. 5. Drawings are not to scale. 6. All images used are for illustrative purposes only and do not represent the actual size, features, specifications, fittings and furnishings. 7. The developer reserves the right to make revisions/ alterations, at its absolute discretion, without any liability whatsoever.



SOBHA HARTLAND

CREEK VISTAS

1 BEDROOM APARTMENT

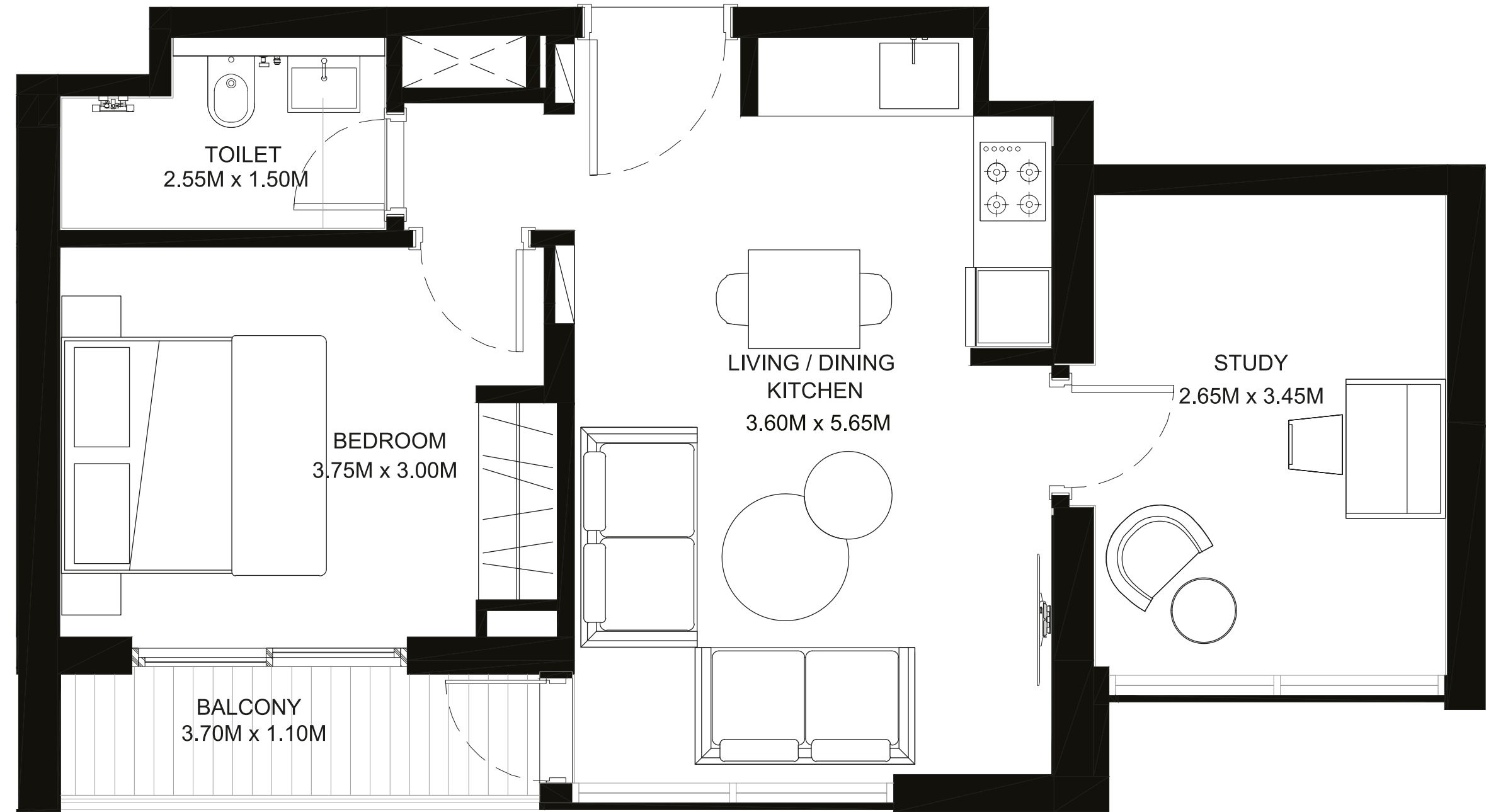
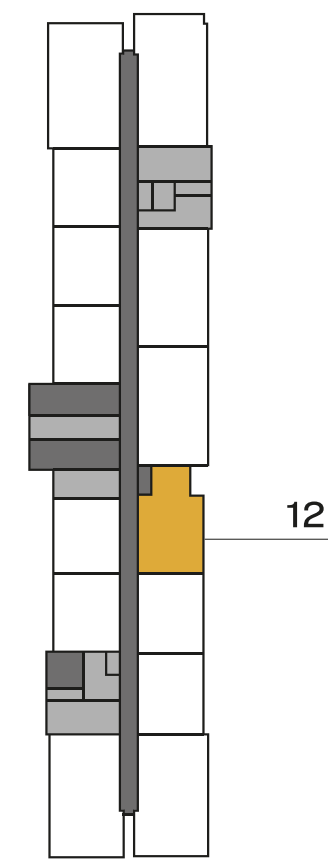
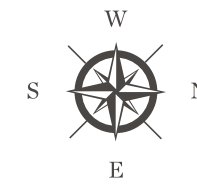
TYPE B (with balcony and study)

Ras Al Khor Wildlife Sanctuary and Canal view

Suite Area - 562.52 Sq. Ft.

Balcony Area - 50.38 Sq. Ft.

Net Saleable Area - 612.90 Sq. Ft.



UNIT TYPE - 1B | LEVELS 2 - 28



Dubai Canal



Ras Al Khor
Wildlife Sanctuary

Disclaimer: 1. All dimensions are in metric, measured to wall finishes. 2. All materials, dimensions & drawings are approximate. 3. Information is subject to change without notice, at developer's absolute discretion. 4. Actual area may vary from the stated area. 5. Drawings are not to scale. 6. All images used are for illustrative purposes only and do not represent the actual size, features, specifications, fittings and furnishings. 7. The developer reserves the right to make revisions/ alterations, at its absolute discretion, without any liability whatsoever.



SOBHA HARTLAND

CREEK VISTAS

2 BEDROOM APARTMENT

TYPE A (corner units and non-corner units, all with two balconies)

Downtown and Canal view

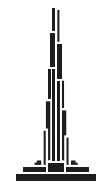
Suite Area - 684.15 Sq. Ft.

Balcony Area - 121.52 Sq. Ft.

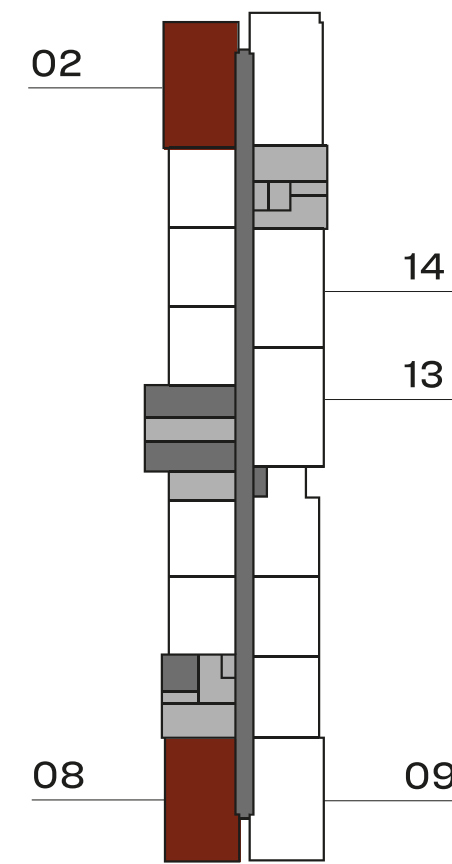
Net Saleable Area - 805.67 Sq. Ft.



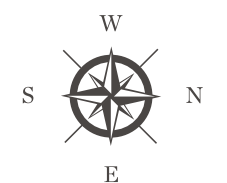
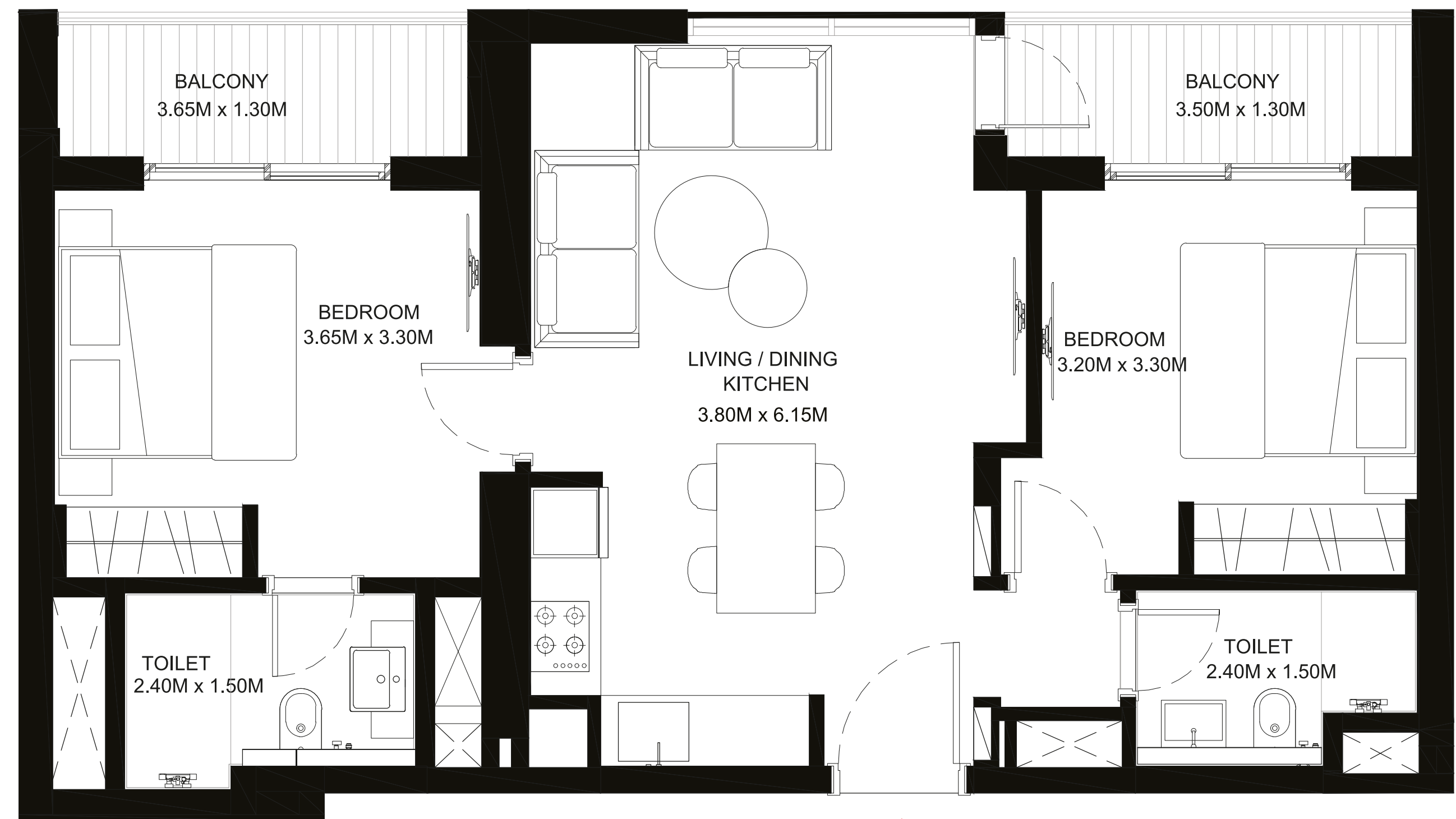
Dubai Canal



Downtown



UNIT TYPE - 2A | LEVELS 2 - 28



Disclaimer: 1. All dimensions are in metric, measured to wall finishes. 2. All materials, dimensions & drawings are approximate. 3. Information is subject to change without notice, at developer's absolute discretion. 4. Actual area may vary from the stated area. 5. Drawings are not to scale. 6. All images used are for illustrative purposes only and do not represent the actual size, features, specifications, fittings and furnishings. 7. The developer reserves the right to make revisions/ alterations, at its absolute discretion, without any liability whatsoever.



SOBHA HARTLAND

CREEK VISTAS

2 BEDROOM APARTMENT

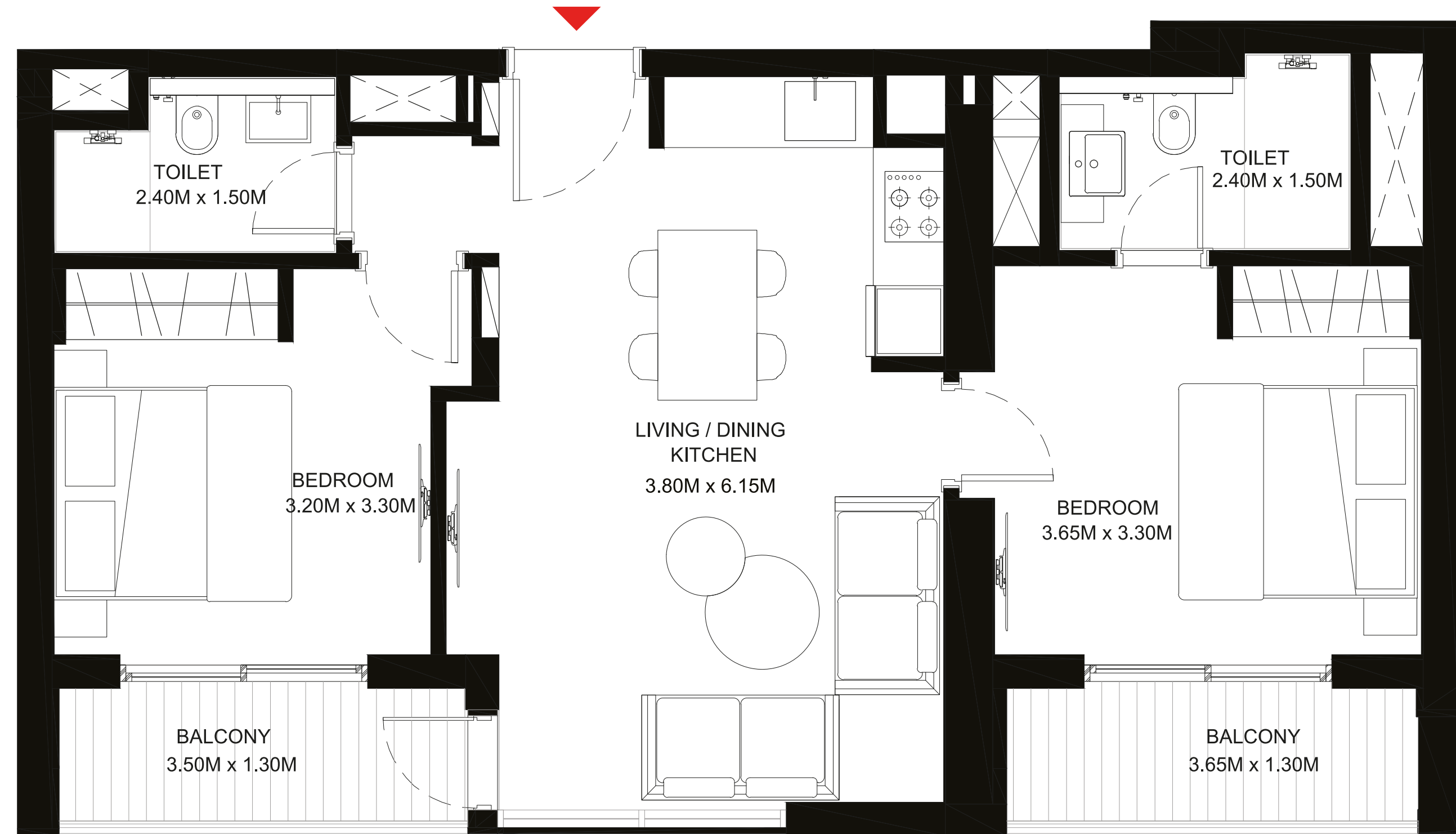
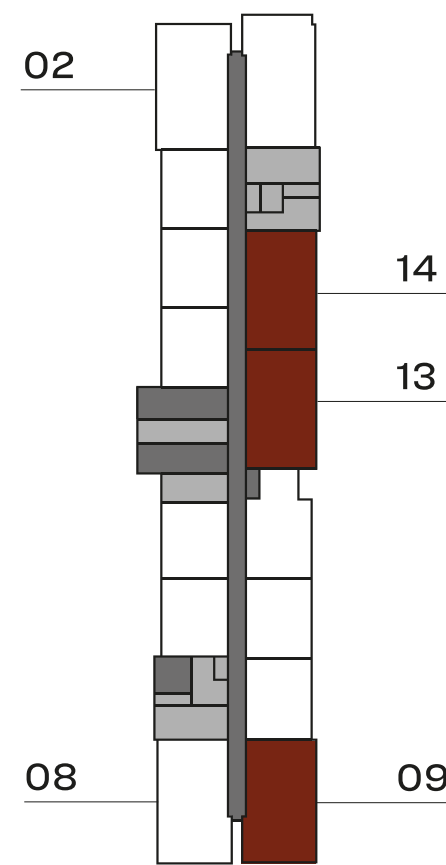
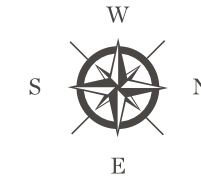
TYPE A (corner units and non-corner units, all with two balconies)

Ras Al Khor Wildlife Sanctuary and Canal view

Suite Area - 685.00 Sq. Ft.

Balcony Area - 119.00 Sq. Ft.

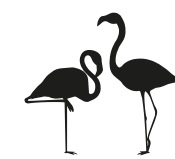
Net Saleable Area - 804.00 Sq. Ft.



UNIT TYPE - 2A | LEVELS 2 - 28



Dubai Canal



Ras Al Khor
Wildlife Sanctuary

Disclaimer: 1. All dimensions are in metric, measured to wall finishes. 2. All materials, dimensions & drawings are approximate. 3. Information is subject to change without notice, at developer's absolute discretion. 4. Actual area may vary from the stated area. 5. Drawings are not to scale. 6. All images used are for illustrative purposes only and do not represent the actual size, features, specifications, fittings and furnishings. 7. The developer reserves the right to make revisions/ alterations, at its absolute discretion, without any liability whatsoever.



SOBHA HARTLAND

CREEK VISTAS

2 BEDROOM APARTMENT

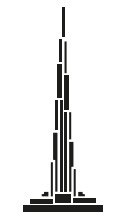
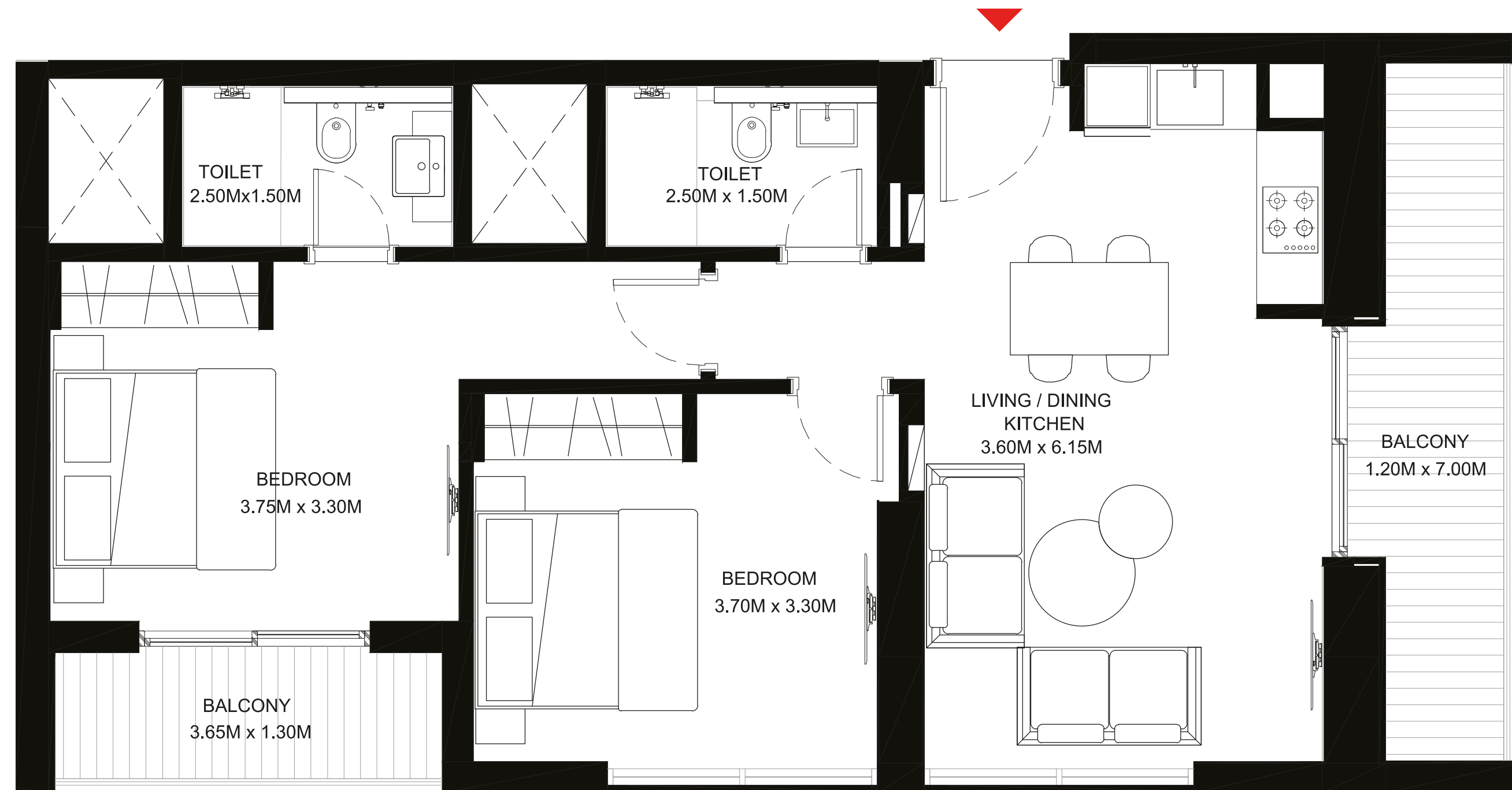
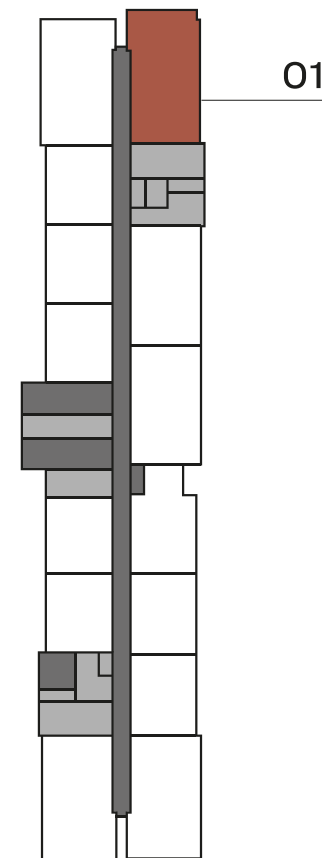
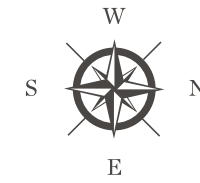
TYPE B (corner units with two balconies)

Ras Al Khor Wildlife Sanctuary, Dubai Creek, Downtown and Canal view

Suite Area - 729.00 Sq. Ft.

Balcony Area - 170.00 Sq. Ft.

Net Saleable Area - 899.00 Sq. Ft.



Downtown



Dubai Creek



Dubai Canal



Ras Al Khor
Wildlife Sanctuary

UNIT TYPE - 2B | LEVELS 2 - 28

Disclaimer: 1. All dimensions are in metric, measured to wall finishes. 2. All materials, dimensions & drawings are approximate. 3. Information is subject to change without notice, at developer's absolute discretion. 4. Actual area may vary from the stated area. 5. Drawings are not to scale. 6. All images used are for illustrative purposes only and do not represent the actual size, features, specifications, fittings and furnishings. 7. The developer reserves the right to make revisions/ alterations, at its absolute discretion, without any liability whatsoever.