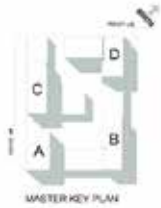


DUBAI HILLS

ESTATE

PARK POINT

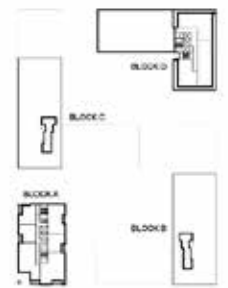


2 BEDROOM – 2.0

| LEVEL | UNIT NUMBER | AREA | | | | | |
|-------|-------------|-----------------|----------------|-----------------|----------------|-----------------|----------------|
| | | SUITE | | BALCONY | | TOTAL | |
| | | Ft ² | m ² | Ft ² | m ² | Ft ² | m ² |

BLOCK B

| | | | | | | | |
|---|------|-------|------|------|-----|--------|------|
| 2 | B202 | 958.6 | 89.1 | 68.1 | 6.3 | 1026.8 | 95.4 |
| | B205 | 971.0 | 90.2 | 69.4 | 6.5 | 1040.4 | 96.7 |
| | B206 | 953.3 | 88.6 | 67.9 | 6.3 | 1021.2 | 94.9 |
| | B207 | 957.4 | 88.9 | 67.3 | 6.3 | 1024.6 | 95.2 |
| 3 | B302 | 958.6 | 89.1 | 68.1 | 6.3 | 1026.8 | 95.4 |
| | B305 | 971.0 | 90.2 | 69.4 | 6.5 | 1040.4 | 96.7 |
| | B306 | 953.3 | 88.6 | 67.9 | 6.3 | 1021.2 | 94.9 |
| | B307 | 957.4 | 88.9 | 67.3 | 6.3 | 1024.6 | 95.2 |
| 4 | B402 | 958.6 | 89.1 | 68.1 | 6.3 | 1026.8 | 95.4 |
| | B405 | 971.0 | 90.2 | 69.4 | 6.5 | 1040.4 | 96.7 |
| | B406 | 953.3 | 88.6 | 67.9 | 6.3 | 1021.2 | 94.9 |
| | B407 | 957.4 | 88.9 | 67.3 | 6.3 | 1024.6 | 95.2 |
| 5 | B502 | 958.6 | 89.1 | 68.1 | 6.3 | 1026.8 | 95.4 |
| | B505 | 971.0 | 90.2 | 69.4 | 6.5 | 1040.4 | 96.7 |
| | B506 | 953.3 | 88.6 | 67.9 | 6.3 | 1021.2 | 94.9 |
| | B507 | 957.4 | 88.9 | 67.3 | 6.3 | 1024.6 | 95.2 |



1. All dimensions are in imperial and metric, and measured to structural elements and exclude wall finishes and construction tolerances. 2. All materials, dimensions, and drawings are approximate only. 3. Information is subject to change without notice, at developer's absolute discretion. 4. Actual area may vary from the stated area. 5. Drawings not to scale. 6. All images used are for illustrative purposes only and do not represent the actual size, features, specifications, fittings, and furnishings. 7. The developer reserves the right to make revisions/ alterations, at its absolute discretion, without any liability whatsoever. *Please note that landscaping and swimming pool are not provided by the developer.