



DUBAI HILLS
ESTATE
MBR CITY

PARK HEIGHTS I





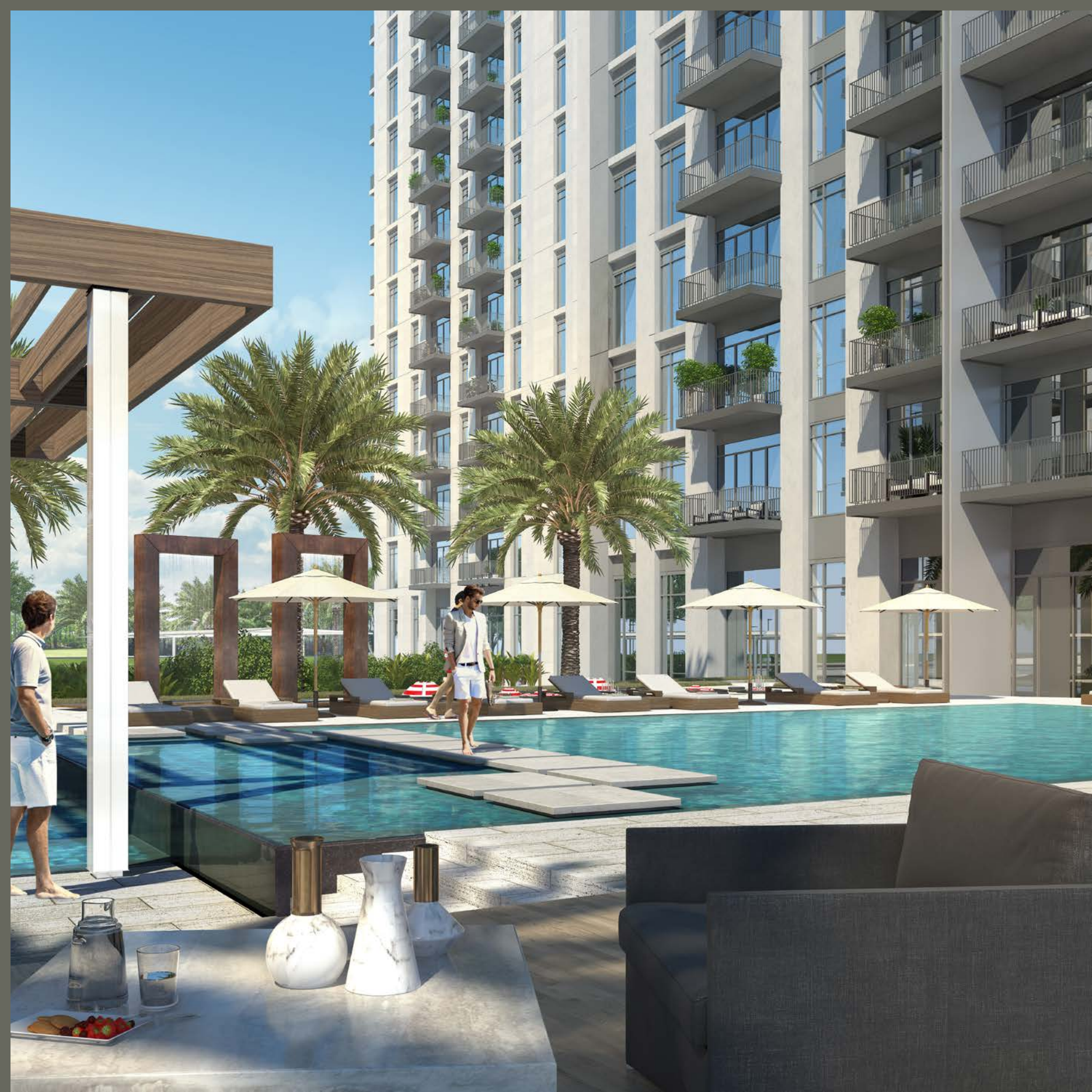
7 MINUTES
WALK TO THE MALL

DIRECT ACCESS
TO BOULEVARD

5 MINUTES
WALK TO
THE CENTRAL PARK









PARK HEIGHTS I AT DUBAI HILLS ESTATE



- | | |
|---------------------|--------------------------|
| 01 - Community Park | 11 - Townhouse Community |
| 02 - Regional Park | 12 - Townhome Community |
| 03 - Golf Club | 13 - Private Hospital |
| 04 - Golf Academy | 14 - Government Hospital |
| 05 - Driving Range | 15 - Civil Defence |
| 06 - Tennis Academy | 16 - Police |
| 07 - Schools | 17 - Community Retail |
| 08 - Hotels | 18 - Golf Villas |
| 09 - Juma Mosque | 19 - Golf Apartments |
| 10 - Metro Station | 20 - Park Heights 1 |

DUBAI HILLS ESTATE

Burj Khalifa
10 Minutes

The Dubai Mall
10 Minutes

Dubai Marina
10 Minutes

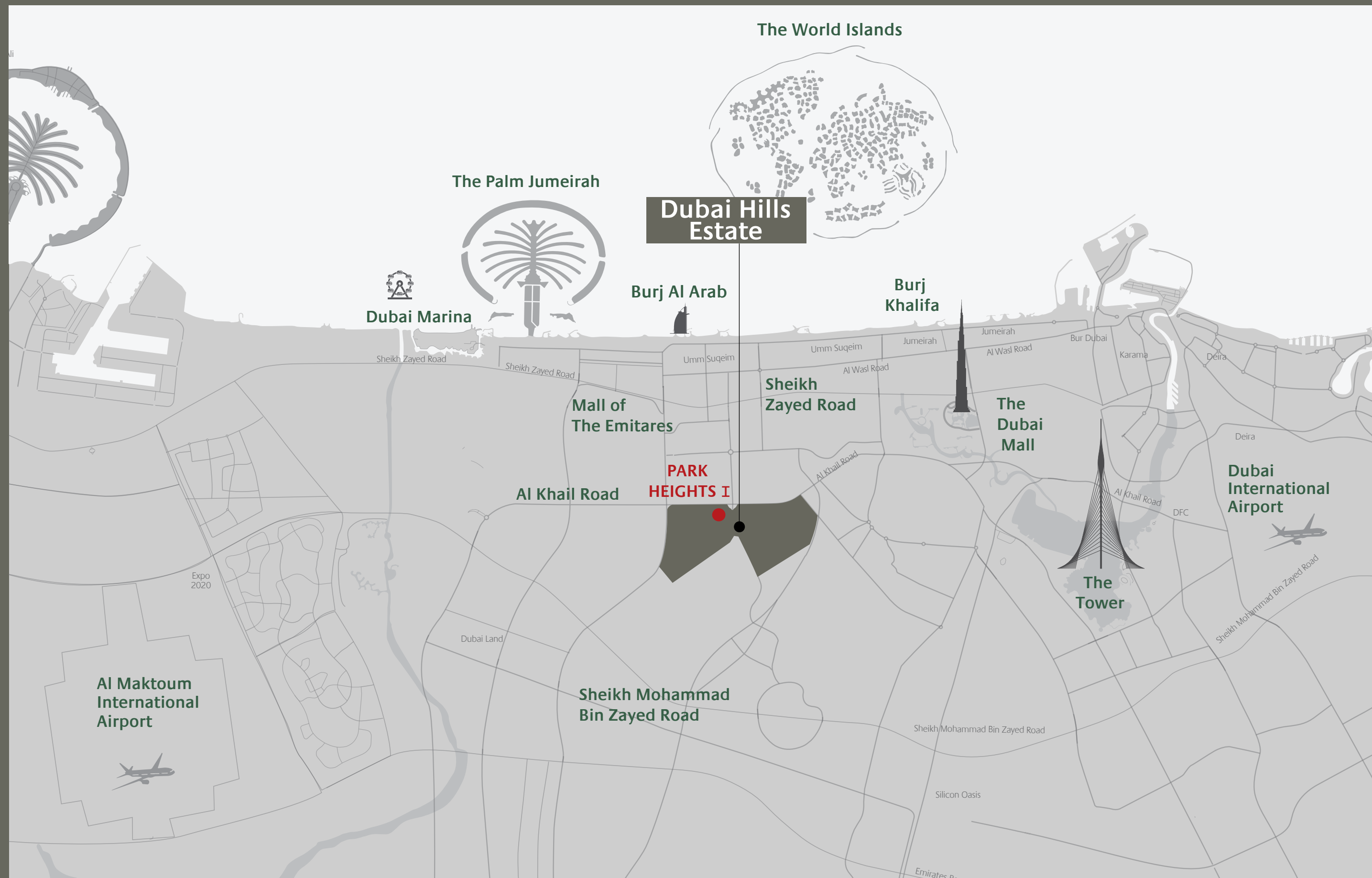
Jumeirah Beach
12 Minutes

The Tower - DCH
15 Minutes

Dubai Intl Airport
20 Minutes

Al Maktoum Airport
35 Minutes

DISTANCES ARE APPROXIMATE





FLOOR PLANS



LEVEL	UNIT NO	UNIT AREA		BALCONY AREA		TOTAL AREA	
		SQM	SQFT.	SQM.	SQFT.	SQM.	SQFT.
1-15	UNIT 01	54.25	583.94	5.53	59.52	59.78	643.46
	UNIT 02	54.25	583.94	5.53	59.52	59.78	643.46
	UNIT 06	54.17	583.08	5.53	59.52	59.70	642.60
	UNIT 07	54.17	583.08	5.53	59.52	59.70	642.60
	UNIT 08	54.17	583.08	5.53	59.52	59.70	642.60
	UNIT 09	54.17	583.08	5.53	59.52	59.70	642.60
	UNIT 11	55.25	594.71	5.53	59.52	60.78	654.23
	UNIT 14	54.25	583.94	5.53	59.52	59.78	643.46
16-18	UNIT 01	54.29	584.37	5.53	59.52	59.82	643.89
	UNIT 02	54.29	584.37	5.53	59.52	59.82	643.89
	UNIT 06	54.19	583.30	5.53	59.52	59.72	642.82
	UNIT 07	54.19	583.30	5.53	59.52	59.72	642.82
	UNIT 08	54.19	583.30	5.53	59.52	59.72	642.82
	UNIT 09	54.19	583.30	5.53	59.52	59.72	642.82
	UNIT 11	55.27	594.92	5.53	59.52	60.80	654.44
	UNIT 14	54.25	583.94	5.53	59.52	59.78	643.46



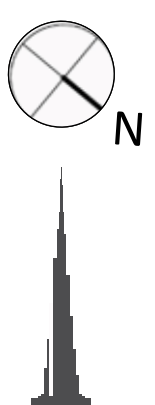
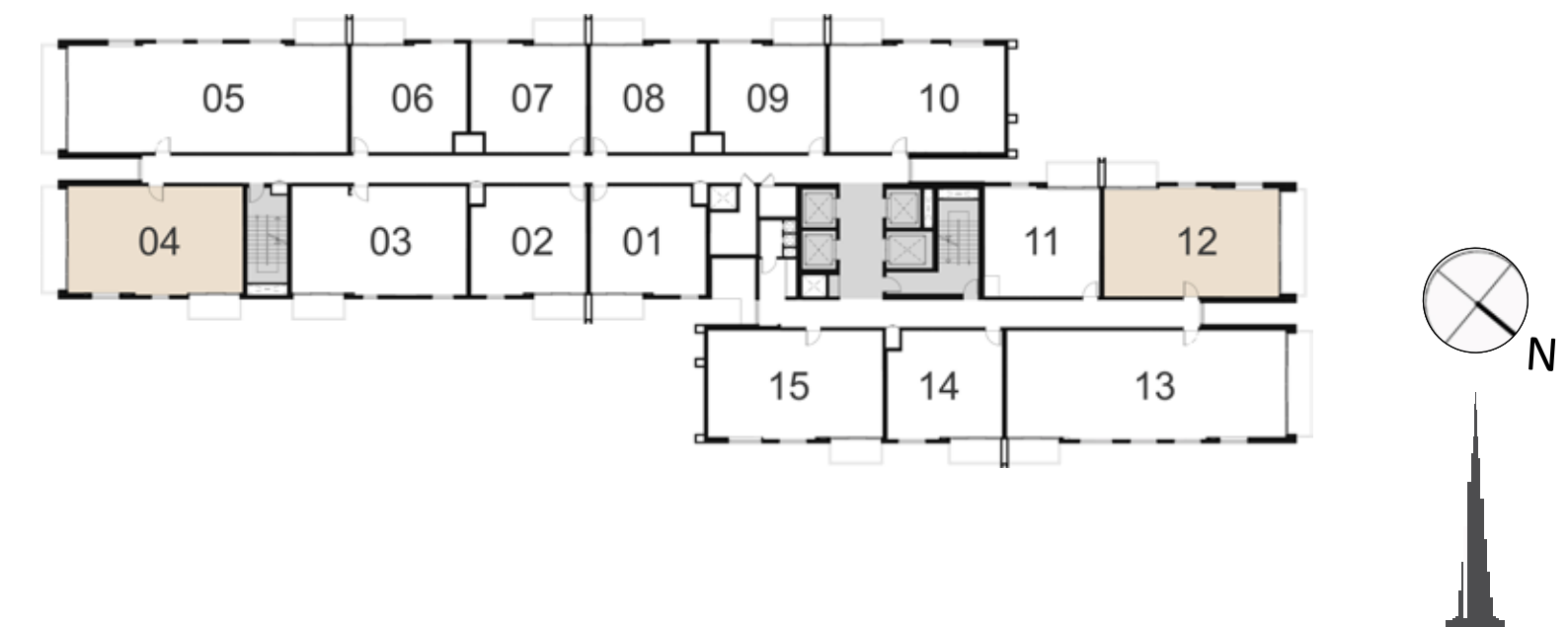


LEVEL	UNIT NO	UNIT AREA		BALCONY AREA		TOTAL AREA	
		SQM	SQFT.	SQM.	SQFT.	SQM.	SQFT.
1-15	UNIT 03	83.37	897.39	5.53	59.52	88.90	956.91
	UNIT 10	83.31	896.74	5.53	59.52	88.84	956.26
	UNIT 15	83.22	895.77	5.53	59.52	88.75	955.29
16-18	UNIT 03	83.28	896.42	5.53	59.52	88.81	955.94
	UNIT 10	83.44	898.14	5.53	59.52	88.97	957.66
	UNIT 15	83.36	897.28	5.69	61.25	89.05	958.53

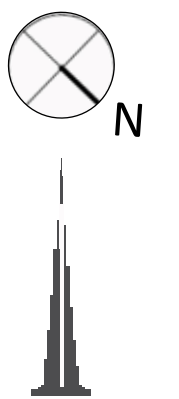
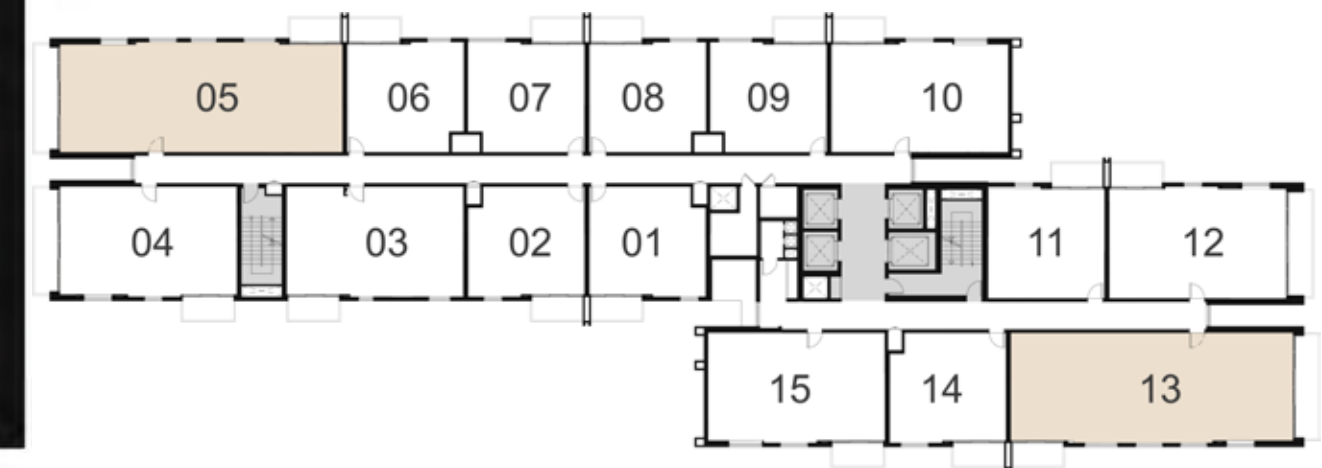




LEVEL	UNIT NO	UNIT AREA		BALCONY AREA		TOTAL AREA	
		SQM	SQFT.	SQM.	SQFT.	SQM.	SQFT.
1-15	UNIT 04	82.72	890.39	16.74	180.19	99.46	1070.58
	UNIT 12	83.89	902.98	16.82	181.05	100.71	1084.03
16-18	UNIT 04	82.60	889.10	16.77	180.51	99.37	1069.61
	UNIT 12	83.91	903.20	16.61	178.79	100.52	1081.99



LEVEL	UNIT NO	UNIT AREA		BALCONY AREA		TOTAL AREA	
		SQM	SQFT.	SQM.	SQFT.	SQM.	SQFT.
1-15	UNIT 05	132.19	1422.88	16.98	182.77	149.17	1605.65
	UNIT 13	132.24	1423.42	16.66	179.33	148.90	1602.75
16-18	UNIT 05	132.21	1423.10	16.77	180.51	148.98	1603.61
	UNIT 13	132.27	1423.74	16.54	178.04	148.81	1601.78



DUBAI HILLS ESTATE

PARK HEIGHTS I

For more information on **PARK HEIGHTS I** in **Dubai Hill Estate**, please call 800 36227(UAE) or +971 4 366 1668 (International). Visit our online sales centre at emaar.com or any of our sales centres across the UAE.

DUBAI:

Dubai Hills Estate Sales Pavillion: Umm Suqeim Road
Emaar Sales Center, Downtown Dubai
Dubai Creek Harbour Sales Centre: Ras Al Khor

ABU DHABI:

Emaar Sales Centre: Al Nahda Tower, Ground Floor, 4th Street,
Corniche, Al Muroor Road

Open from Saturday - Thursday, from 8.30am - 6.00pm

دبي هيلز استيت

بارك هايتس I

للمزيد من المعلومات حول بارك هايتس I في دبي هيلز استيت الرجاء الاتصال بالرقم (٨٠٠٣٦٢٢٧) في الإمارات العربية المتحدة أو +٩٧١ ٤ ٣٦٦ ١٦٦٨ (دولي) أو قم بزيارة مركز مبيعاتنا الإلكتروني على الموقع emaar.com

دبي

مركز مبيعات دبي هيلز استيت على طريق أم سقيم
مركز مبيعات إعمار في وسط مدينة دبي
مركز مبيعات خور دبي في رأس الخور

أبوظبي

مركز مبيعات إعمار في برج النهضة، الشارع الرابع،
الكورنيش، طريق المرور - أبوظبي

السبت إلى الخميس من الساعة ٨:٣٠ صباحاً حتى الساعة ٦ مساءً