

FLOOR PLANS

TOWER 1

CREEK GATE

DUBAI CREEK

HARBOUR

CREEK GATE



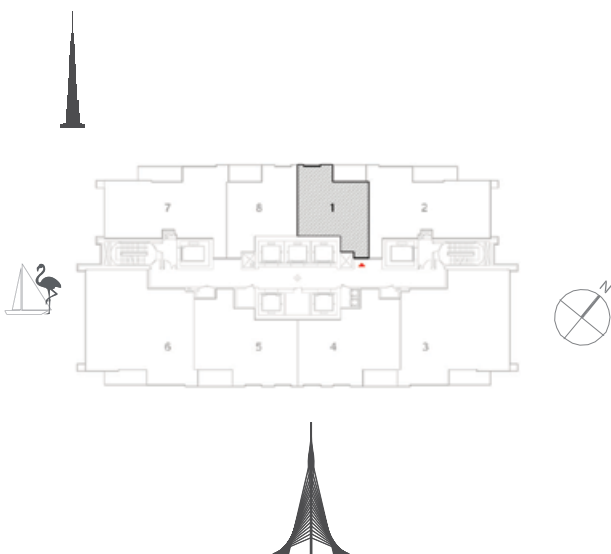
1 BEDROOM WITH BALCONY

TOWER 1
UNIT 1 | LEVELS 3-17, 19-30

Suite Area 645 Sq.ft. / 59.90 Sq.m.

Balcony Area 80 Sq.ft. / 7.42 Sq.m.

Total Area 725 Sq.ft. / 67.32 Sq.m.

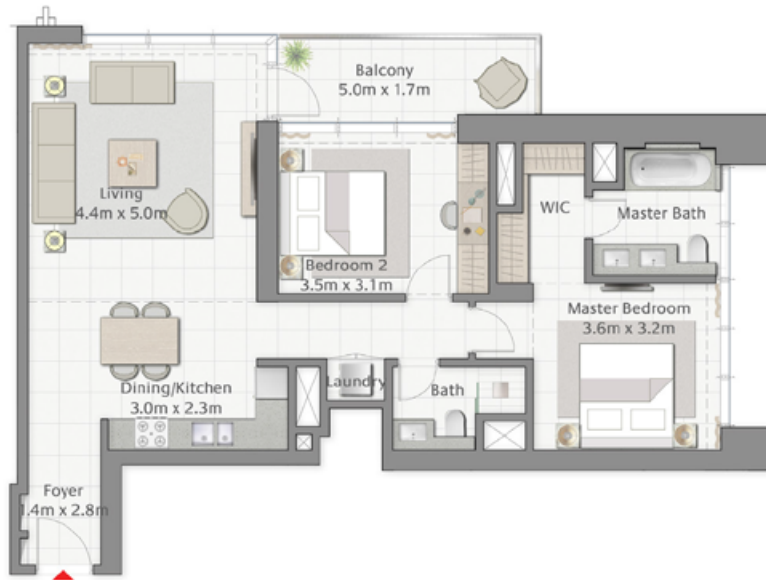


1. All dimensions are in imperial and metric, and measured to structural elements and exclude wall finishes and construction tolerances. 2. All materials, dimensions, and drawings are approximate only. 3. Information is subject to change without notice, at developer's absolute discretion. 4. Actual area may vary from the stated area. 5. Drawings not to scale. 6. All images used are for illustrative purposes only and do not represent the actual size, features, specifications, fittings, and furnishings. 7. The developer reserves the right to make revisions/ alterations, at its absolute discretion, without any liability whatsoever. *Please note that landscaping and swimming pool are not provided by the developer.

DUBAI CREEK

HARBOUR

CREEK GATE



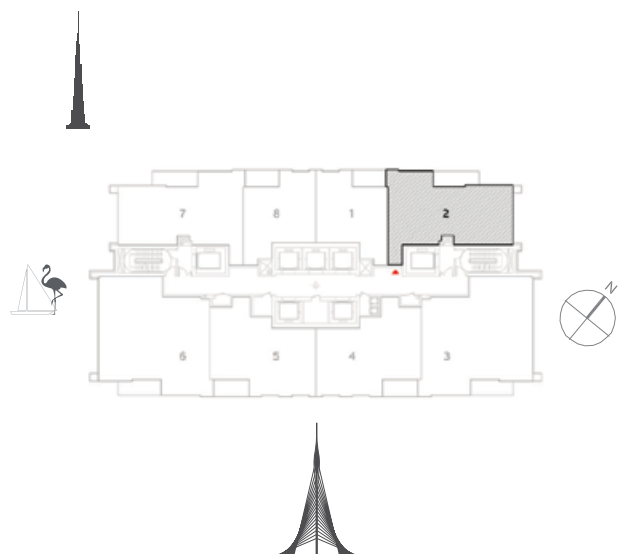
2 BEDROOM WITH BALCONY

TOWER 1
UNIT 2 | LEVELS 3-17, 19-30

Suite Area 1018 Sq.ft. / 94.58 Sq.m.

Balcony Area 93 Sq.ft. / 8.60 Sq.m.

Total Area 1111 Sq.ft. / 103.18 Sq.m.



1. All dimensions are in imperial and metric, and measured to structural elements and exclude wall finishes and construction tolerances. 2. All materials, dimensions, and drawings are approximate only. 3. Information is subject to change without notice, at developer's absolute discretion. 4. Actual area may vary from the stated area. 5. Drawings not to scale. 6. All images used are for illustrative purposes only and do not represent the actual size, features, specifications, fittings, and furnishings. 7. The developer reserves the right to make revisions/ alterations, at its absolute discretion, without any liability whatsoever. *Please note that landscaping and swimming pool are not provided by the developer.

DUBAI CREEK

HARBOUR

CREEK GATE



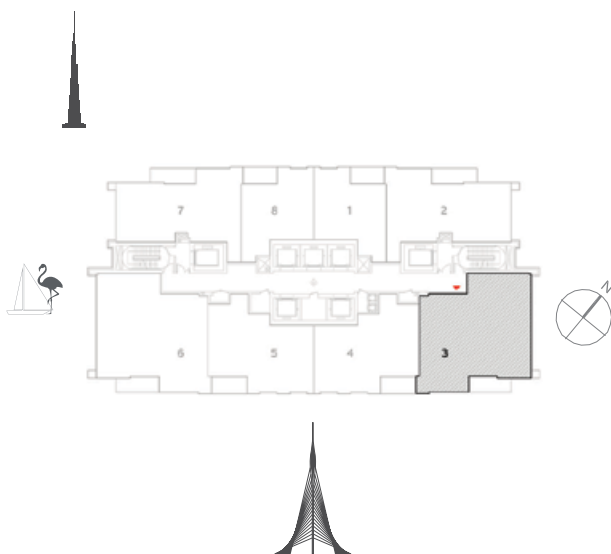
3 BEDROOM WITH BALCONY

TOWER 1
UNIT 3 | LEVELS 3-17, 19-30

Suite Area 1403 Sq.ft. / 130.31 Sq.m.

Balcony Area 87 Sq.ft. / 8.11 Sq.m.

Total Area 1490 Sq.ft. / 138.42 Sq.m.



1. All dimensions are in imperial and metric, and measured to structural elements and exclude wall finishes and construction tolerances. 2. All materials, dimensions, and drawings are approximate only. 3. Information is subject to change without notice, at developer's absolute discretion. 4. Actual area may vary from the stated area. 5. Drawings not to scale. 6. All images used are for illustrative purposes only and do not represent the actual size, features, specifications, fittings, and furnishings. 7. The developer reserves the right to make revisions/ alterations, at its absolute discretion, without any liability whatsoever. *Please note that landscaping and swimming pool are not provided by the developer.

DUBAI CREEK

HARBOUR

CREEK GATE



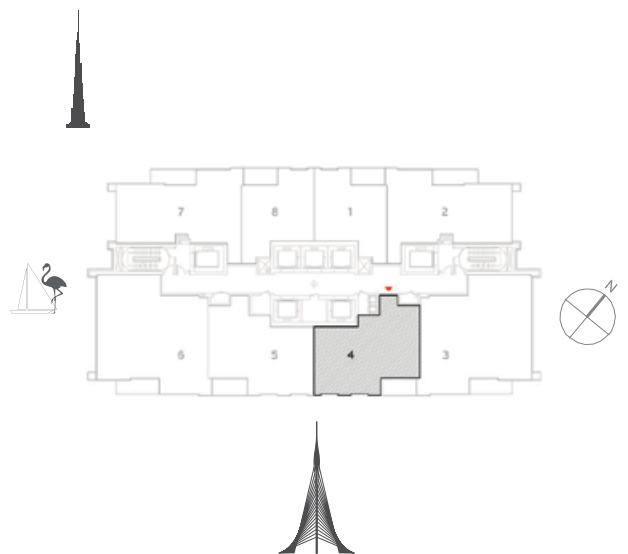
2 BEDROOM WITH BALCONY

TOWER 1
UNIT 4 | LEVELS 3-17, 19-30

Suite Area 963 Sq.ft. / 89.47 Sq.m.

Balcony Area 83 Sq.ft. / 7.68 Sq.m.

Total Area 1046 Sq.ft. / 97.15 Sq.m.



1. All dimensions are in imperial and metric, and measured to structural elements and exclude wall finishes and construction tolerances. 2. All materials, dimensions, and drawings are approximate only. 3. Information is subject to change without notice, at developer's absolute discretion. 4. Actual area may vary from the stated area. 5. Drawings not to scale. 6. All images used are for illustrative purposes only and do not represent the actual size, features, specifications, fittings, and furnishings. 7. The developer reserves the right to make revisions/ alterations, at its absolute discretion, without any liability whatsoever. *Please note that landscaping and swimming pool are not provided by the developer.

DUBAI CREEK

HARBOUR

CREEK GATE



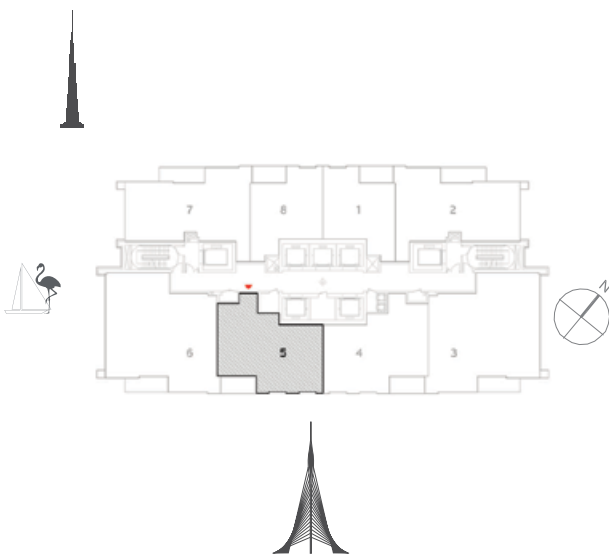
2 BEDROOM WITH BALCONY

TOWER 1
UNIT 5 | LEVELS 3-17, 19-30

Suite Area 963 Sq.ft. / 89.47 Sq.m.

Balcony Area 83 Sq.ft. / 7.68 Sq.m.

Total Area 1046 Sq.ft. / 97.15 Sq.m.



1. All dimensions are in imperial and metric, and measured to structural elements and exclude wall finishes and construction tolerances. 2. All materials, dimensions, and drawings are approximate only. 3. Information is subject to change without notice, at developer's absolute discretion. 4. Actual area may vary from the stated area. 5. Drawings not to scale. 6. All images used are for illustrative purposes only and do not represent the actual size, features, specifications, fittings, and furnishings. 7. The developer reserves the right to make revisions/ alterations, at its absolute discretion, without any liability whatsoever. *Please note that landscaping and swimming pool are not provided by the developer.

DUBAI CREEK

HARBOUR

CREEK GATE



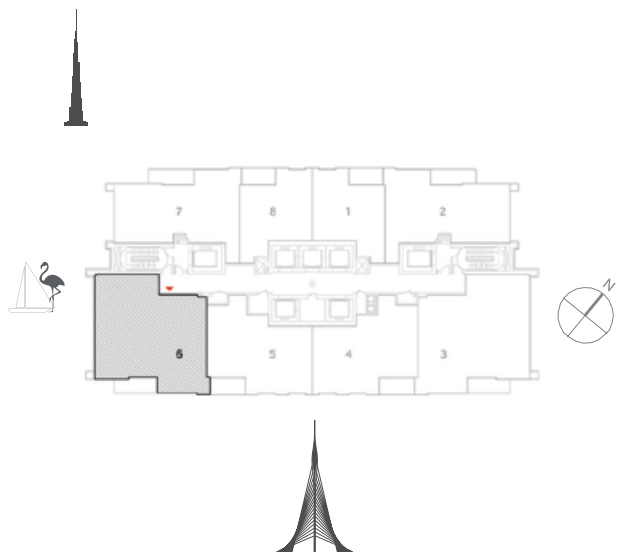
3 BEDROOM WITH BALCONY

TOWER 1
UNIT 6 | LEVELS 3-17, 19-30

Suite Area 1403 Sq.ft. / 130.31 Sq.m.

Balcony Area 87 Sq.ft. / 8.11 Sq.m.

Total Area 1490 Sq.ft. / 138.42 Sq.m.



1. All dimensions are in imperial and metric, and measured to structural elements and exclude wall finishes and construction tolerances. 2. All materials, dimensions, and drawings are approximate only. 3. Information is subject to change without notice, at developer's absolute discretion. 4. Actual area may vary from the stated area. 5. Drawings not to scale. 6. All images used are for illustrative purposes only and do not represent the actual size, features, specifications, fittings, and furnishings. 7. The developer reserves the right to make revisions/ alterations, at its absolute discretion, without any liability whatsoever. *Please note that landscaping and swimming pool are not provided by the developer.

DUBAI CREEK

HARBOUR

CREEK GATE



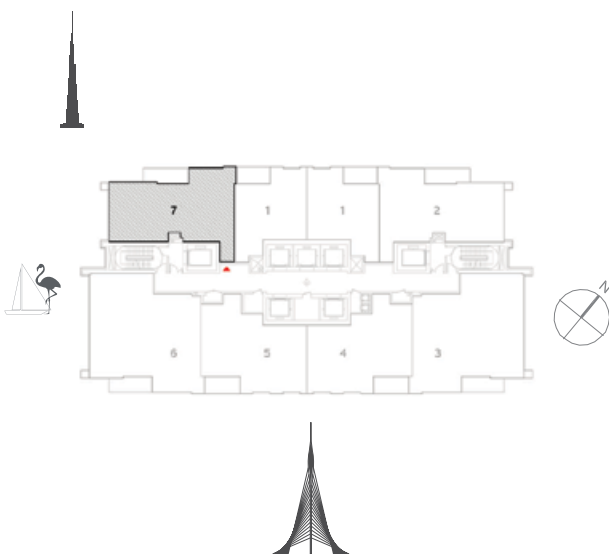
2 BEDROOM WITH BALCONY

TOWER 1
UNIT 7 | LEVELS 3-17, 19-30

Suite Area 1018 Sq.ft. / 94.58 Sq.m.

Balcony Area 93 Sq.ft. / 8.60 Sq.m.

Total Area 1111 Sq.ft. / 103.18 Sq.m.



1. All dimensions are in imperial and metric, and measured to structural elements and exclude wall finishes and construction tolerances. 2. All materials, dimensions, and drawings are approximate only. 3. Information is subject to change without notice, at developer's absolute discretion. 4. Actual area may vary from the stated area. 5. Drawings not to scale. 6. All images used are for illustrative purposes only and do not represent the actual size, features, specifications, fittings, and furnishings. 7. The developer reserves the right to make revisions/ alterations, at its absolute discretion, without any liability whatsoever. *Please note that landscaping and swimming pool are not provided by the developer.

DUBAI CREEK

HARBOUR

CREEK GATE



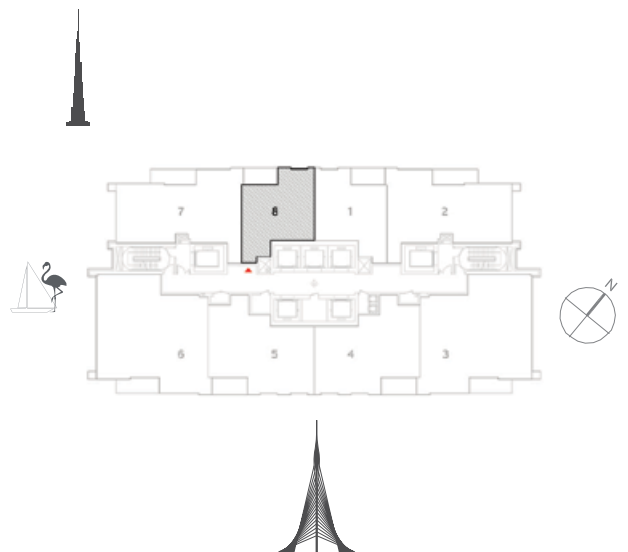
1 BEDROOM WITH BALCONY

TOWER 1
UNIT 8 | LEVELS 3-17, 19-30

Suite Area 645 Sq.ft. / 59.90 Sq.m.

Balcony Area 80 Sq.ft. / 7.42 Sq.m.

Total Area 725 Sq.ft. / 67.32 Sq.m.



1. All dimensions are in imperial and metric, and measured to structural elements and exclude wall finishes and construction tolerances. 2. All materials, dimensions, and drawings are approximate only. 3. Information is subject to change without notice, at developer's absolute discretion. 4. Actual area may vary from the stated area. 5. Drawings not to scale. 6. All images used are for illustrative purposes only and do not represent the actual size, features, specifications, fittings, and furnishings. 7. The developer reserves the right to make revisions/ alterations, at its absolute discretion, without any liability whatsoever. *Please note that landscaping and swimming pool are not provided by the developer.

DUBAI CREEK

HARBOUR

CREEK GATE

For more information on **Creek Gate** in Dubai Creek Harbour, please call 800 36227(UAE) or +971 4 366 1668 (International).

Visit our online sales centre at emaar.com or any of our sales centres across the UAE.

DUBAI:

Emaar Sales Center, Downtown Dubai, Dubai

Dubai Hills Estate Sales Pavillion: Umm Suqeim Road

Dubai Creek Harbour Sales Centre: Ras Al Khor

ABU DHABI:

Emaar Sales Centre: Al Nahda Tower, Ground Floor, 4th Street,
Corniche, Al Muroor Road

Open from Saturday - Thursday, from 8.30am - 6.00pm



نور دبي

كريك جيت

للمزيد من المعلومات حول كريك غايت يرجى زيارتنا
يرجى الاتصال بالرقم (٨٠٠٣٦٢٢٧) في الإمارات العربية المتحدة دولي أو ٣٦٦ ١٦٨٨ ٤ ٩٧١ +
أو قم بزيارة مركز مبيعاتنا الإلكتروني على الموقع emaar.com

دبي

مركز مبيعات إعمار في وسط مدينة دبي - دبي
مركز مبيعات دبي هيلز استيت على طريق أم سقيم - دبي
مركز مبيعات خور دبي في رأس الخور - دبي

أبوظبي

مركز مبيعات إعمار في برج النهضة، الشارع الرابع،
الكورنيش، طريق المرور - أبوظبي

السبت إلى الخميس من الساعة ٨:٣٠ صباحاً حتى الساعة ٦ مساءً