



# FLOOR PLANS



LEVEL	UNIT NO	UNIT AREA		BALCONY AREA		TOTAL AREA	
		SQM	SQFT.	SQM.	SQFT.	SQM.	SQFT.
1-15	UNIT 01	54.25	583.94	5.53	59.52	59.78	643.46
	UNIT 02	54.25	583.94	5.53	59.52	59.78	643.46
	UNIT 06	54.17	583.08	5.53	59.52	59.70	642.60
	UNIT 07	54.17	583.08	5.53	59.52	59.70	642.60
	UNIT 08	54.17	583.08	5.53	59.52	59.70	642.60
	UNIT 09	54.17	583.08	5.53	59.52	59.70	642.60
	UNIT 11	55.25	594.71	5.53	59.52	60.78	654.23
	UNIT 14	54.25	583.94	5.53	59.52	59.78	643.46
16-18	UNIT 01	54.29	584.37	5.53	59.52	59.82	643.89
	UNIT 02	54.29	584.37	5.53	59.52	59.82	643.89
	UNIT 06	54.19	583.30	5.53	59.52	59.72	642.82
	UNIT 07	54.19	583.30	5.53	59.52	59.72	642.82
	UNIT 08	54.19	583.30	5.53	59.52	59.72	642.82
	UNIT 09	54.19	583.30	5.53	59.52	59.72	642.82
	UNIT 11	55.27	594.92	5.53	59.52	60.80	654.44
	UNIT 14	54.25	583.94	5.53	59.52	59.78	643.46

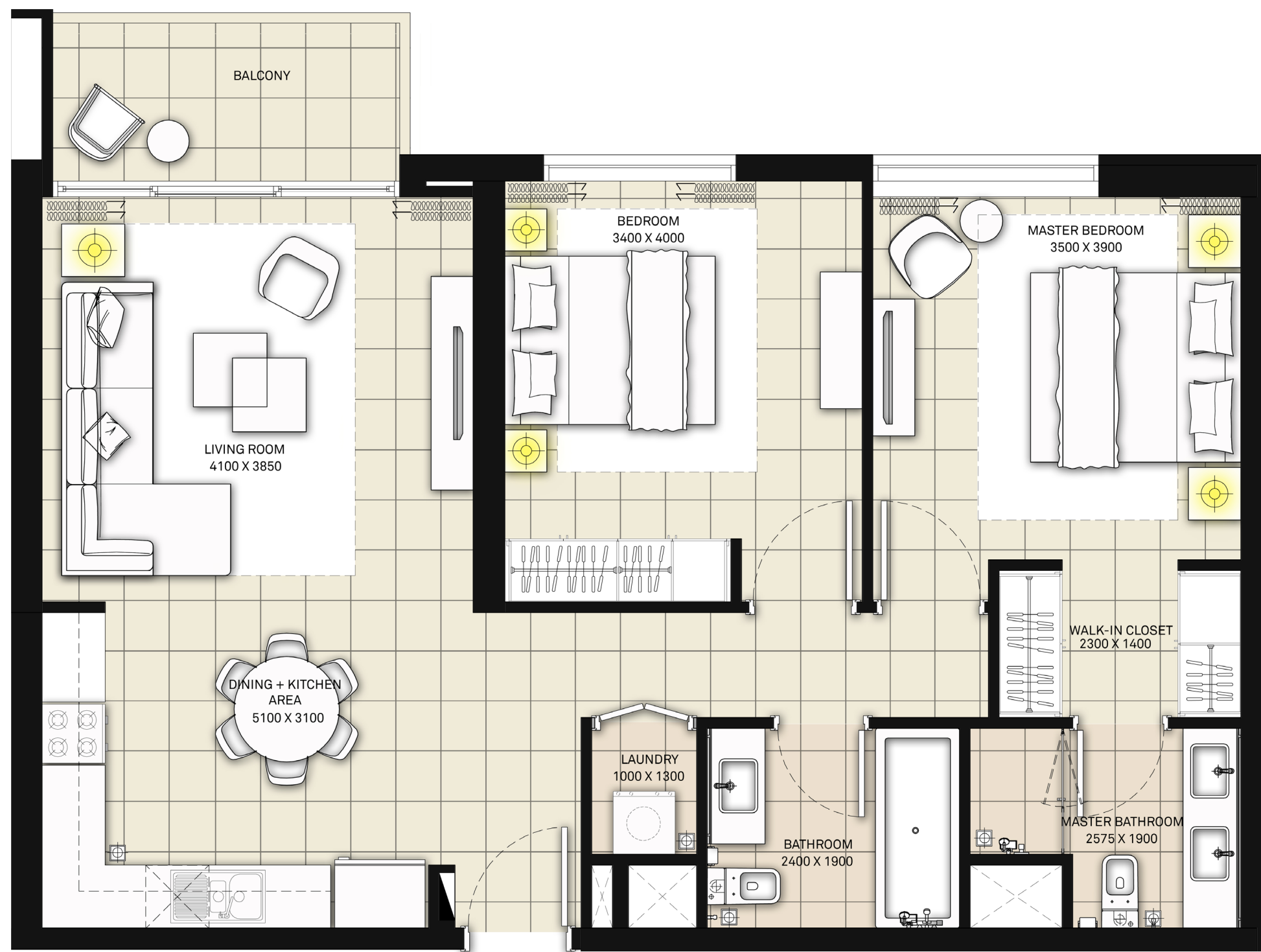


# DUBAI HILLS

ESTATE  
PARK HEIGHTS I

## 2 BEDROOM APARTMENT

LEVEL	UNIT NO	UNIT AREA		BALCONY AREA		TOTAL AREA	
		SQM	SQFT.	SQM.	SQFT.	SQM.	SQFT.
1-15	UNIT 03	<b>83.37</b>	897.39	<b>5.53</b>	59.52	<b>88.90</b>	956.91
	UNIT 10	<b>83.31</b>	896.74	<b>5.53</b>	59.52	<b>88.84</b>	956.26
	UNIT 15	<b>83.22</b>	895.77	<b>5.53</b>	59.52	<b>88.75</b>	955.29
16-18	UNIT 03	<b>83.28</b>	896.42	<b>5.53</b>	59.52	<b>88.81</b>	955.94
	UNIT 10	<b>83.44</b>	898.14	<b>5.53</b>	59.52	<b>88.97</b>	957.66
	UNIT 15	<b>83.36</b>	897.28	<b>5.69</b>	61.25	<b>89.05</b>	958.53



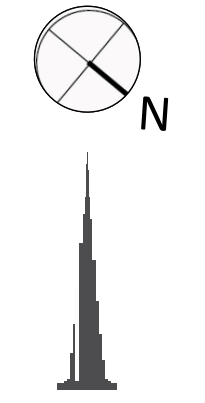
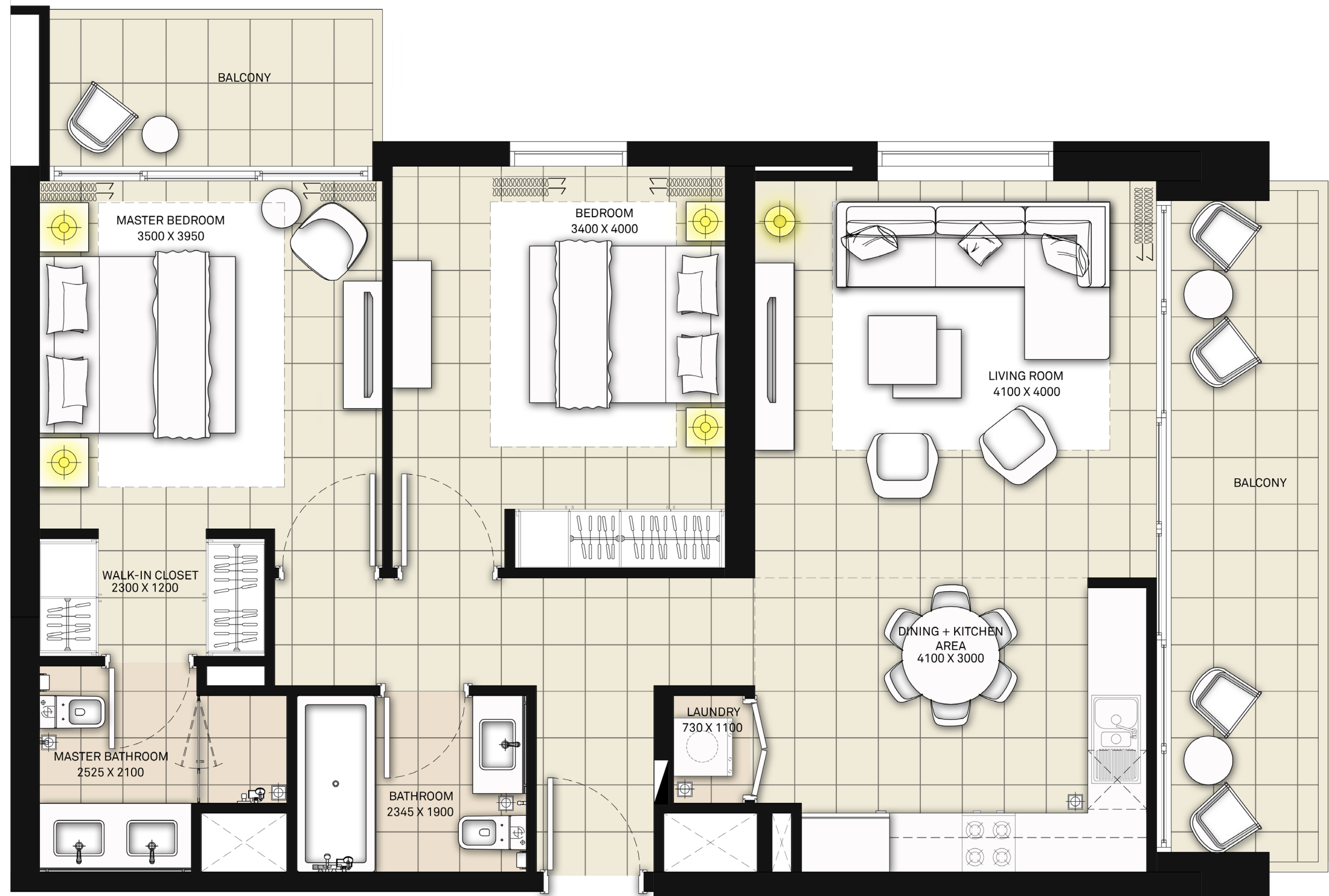
1. All dimensions are in imperial and metric, and measured to structural elements and exclude wall finishes and construction tolerances. 2. All materials, dimensions, and drawings are approximate only. 3. Information is subject to change without notice, at developer's absolute discretion. 4. Actual area may vary from the stated area. 5. Drawings not to scale. 6. All images used are for illustrative purposes only and do not represent the actual size, features, specifications, fittings, and furnishings. 7. The developer reserves the right to make revisions/ alterations, at its absolute discretion, without any liability whatsoever.

# DUBAI HILLS

ESTATE  
PARK HEIGHTS I

## 2 BEDROOM APARTMENT

LEVEL	UNIT NO	UNIT AREA		BALCONY AREA		TOTAL AREA	
		SQM	SQFT.	SQM.	SQFT.	SQM.	SQFT.
1-15	UNIT 04	<b>82.72</b>	890.39	<b>16.74</b>	180.19	<b>99.46</b>	1070.58
	UNIT 12	<b>83.89</b>	902.98	<b>16.82</b>	181.05	<b>100.71</b>	1084.03
16-18	UNIT 04	<b>82.60</b>	889.10	<b>16.77</b>	180.51	<b>99.37</b>	1069.61
	UNIT 12	<b>83.91</b>	903.20	<b>16.61</b>	178.79	<b>100.52</b>	1081.99



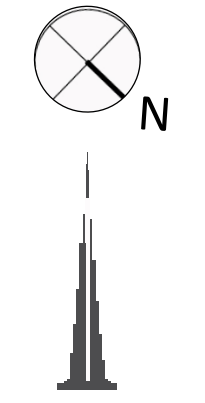
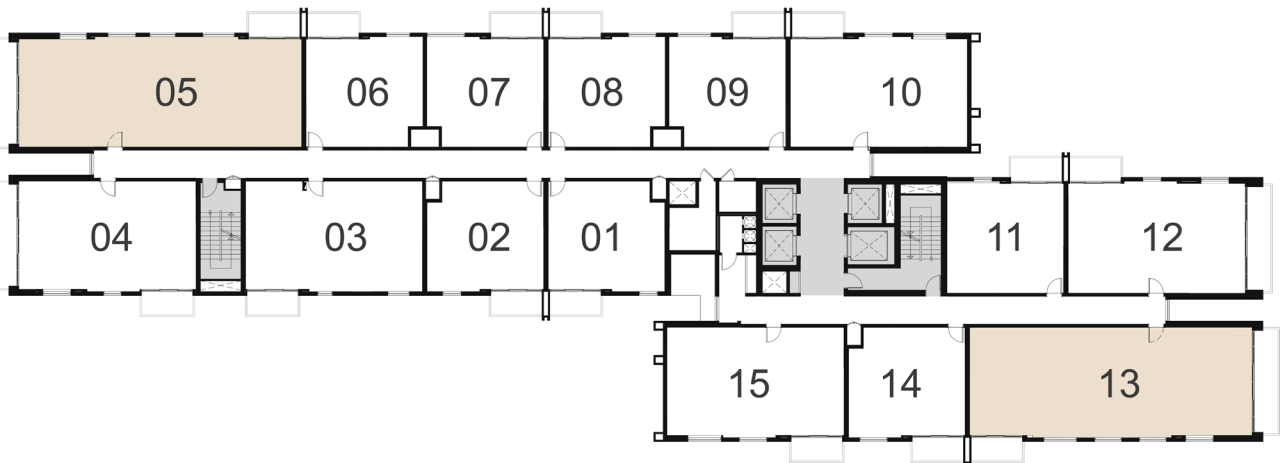
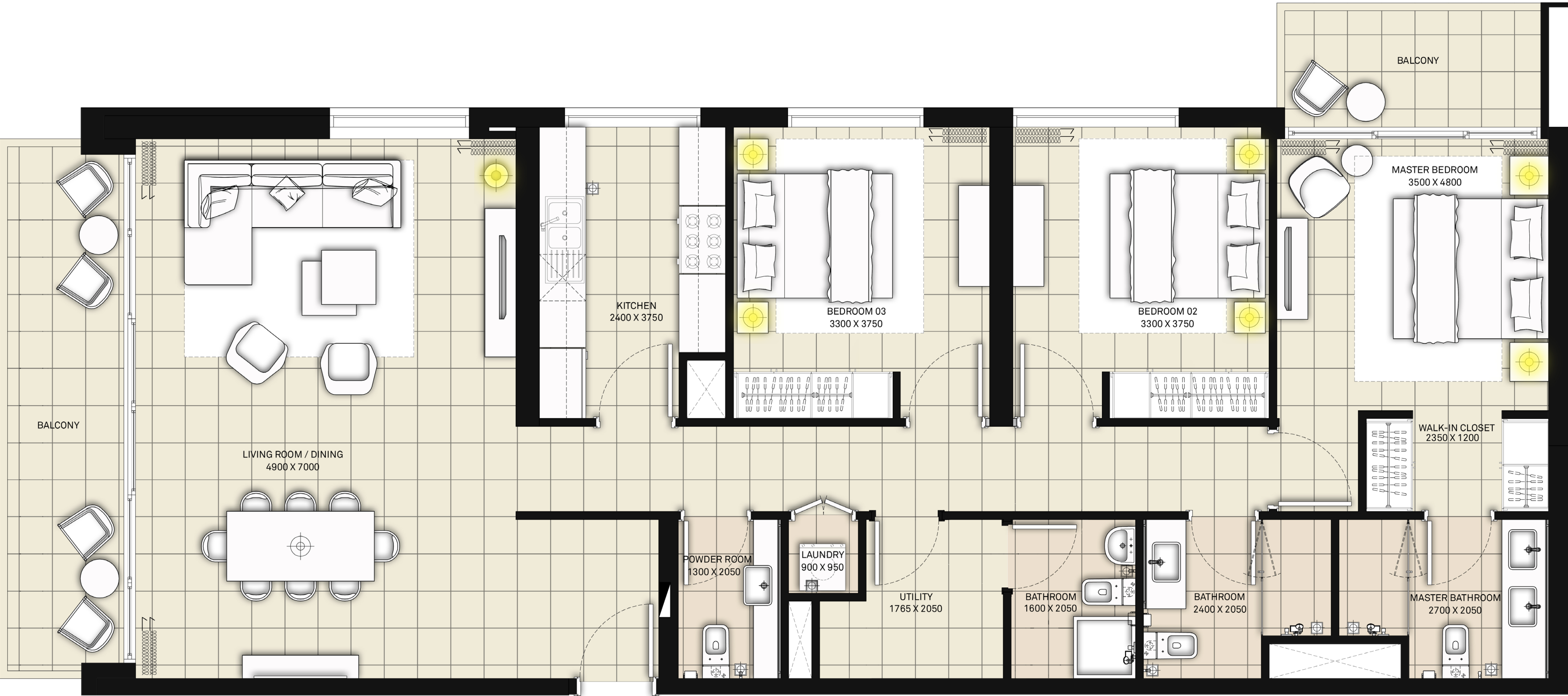
1. All dimensions are in imperial and metric, and measured to structural elements and exclude wall finishes and construction tolerances. 2. All materials, dimensions, and drawings are approximate only. 3. Information is subject to change without notice, at developer's absolute discretion. 4. Actual area may vary from the stated area. 5. Drawings not to scale. 6. All images used are for illustrative purposes only and do not represent the actual size, features, specifications, fittings, and furnishings. 7. The developer reserves the right to make revisions/ alterations, at its absolute discretion, without any liability whatsoever.

# DUBAI HILLS

ESTATE  
PARK HEIGHTS I

## 3 BEDROOM APARTMENT

LEVEL	UNIT NO	UNIT AREA		BALCONY AREA		TOTAL AREA	
		SQM	SQFT.	SQM.	SQFT.	SQM.	SQFT.
1-15	UNIT 05	<b>132.19</b>	1422.88	<b>16.98</b>	182.77	<b>149.17</b>	1605.65
	UNIT 13	<b>132.24</b>	1423.42	<b>16.66</b>	179.33	<b>148.90</b>	1602.75
16-18	UNIT 05	<b>132.21</b>	1423.10	<b>16.77</b>	180.51	<b>148.98</b>	1603.61
	UNIT 13	<b>132.27</b>	1423.74	<b>16.54</b>	178.04	<b>148.81</b>	1601.78



1. All dimensions are in imperial and metric, and measured to structural elements and exclude wall finishes and construction tolerances. 2. All materials, dimensions, and drawings are approximate only. 3. Information is subject to change without notice, at developer's absolute discretion. 4. Actual area may vary from the stated area. 5. Drawings not to scale. 6. All images used are for illustrative purposes only and do not represent the actual size, features, specifications, fittings, and furnishings. 7. The developer reserves the right to make revisions/ alterations, at its absolute discretion, without any liability whatsoever.